

Customer Information Sheet

DRAWING No.: S7041-42R

SHEET 2 OF 2

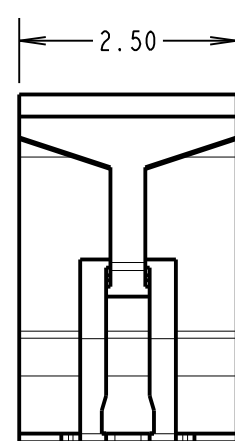
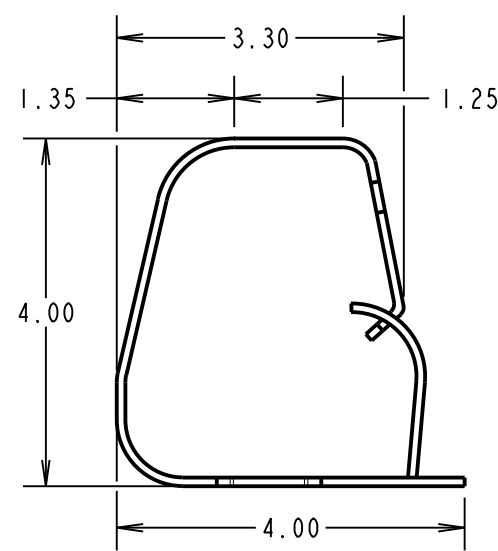
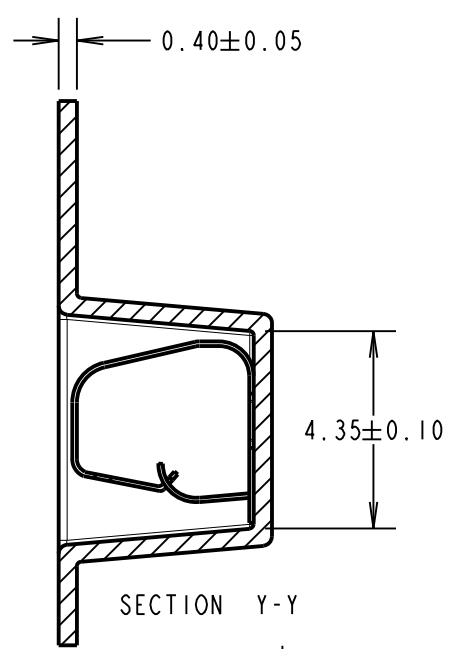
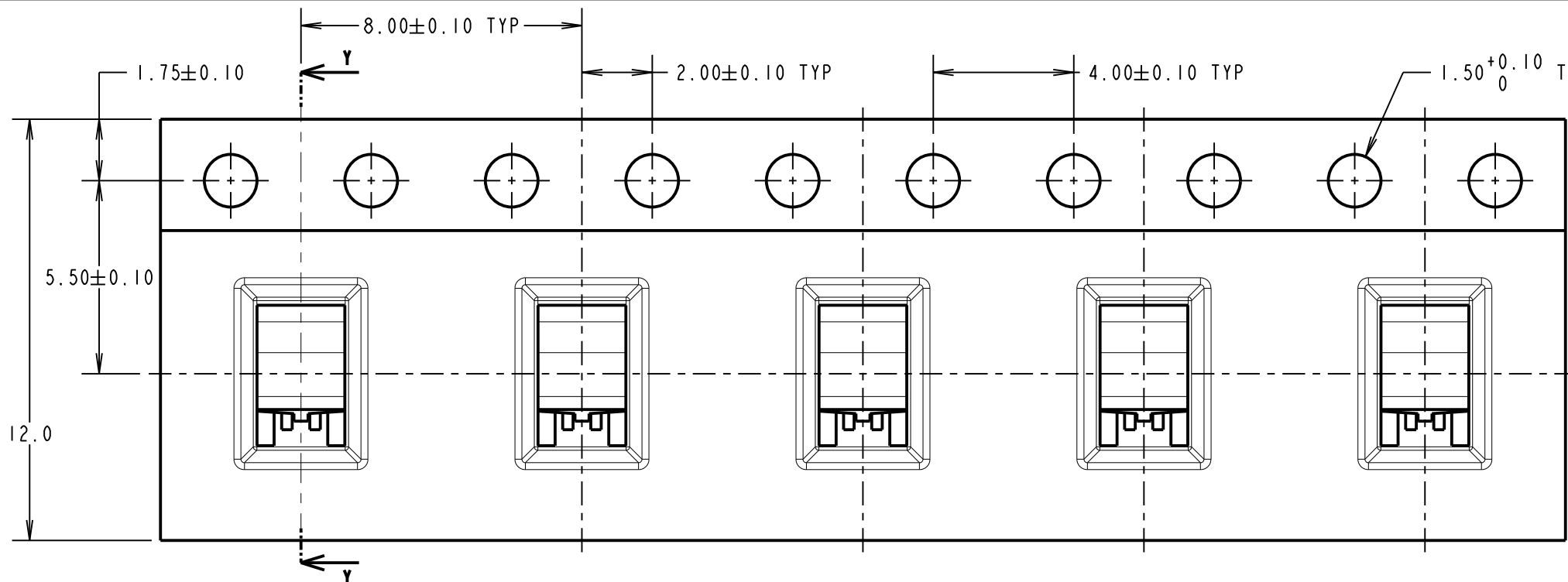
IF IN DOUBT - ASK

©

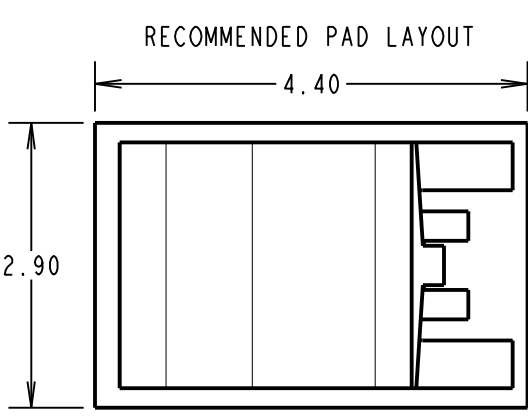
NOT TO SCALE

THIRD ANGLE PROJECTION

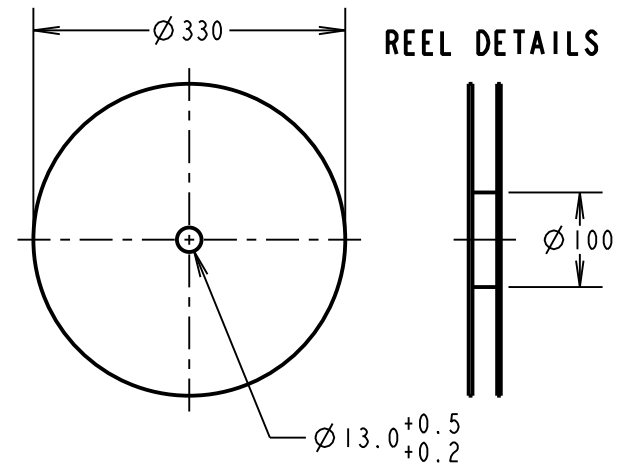
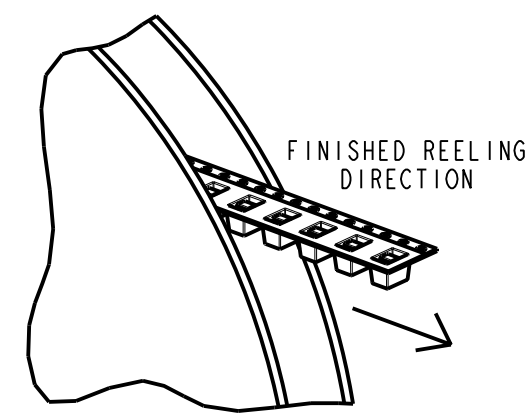
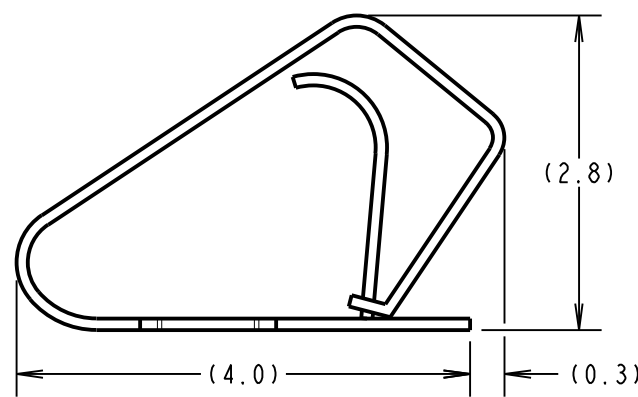
ALL DIMENSIONS IN mm



COMPONENT DETAILS



COMPONENT AT MINIMUM RECOMMENDED HEIGHT



COMPONENT SPECIFICATION
 MATERIAL = TITANIUM COPPER ALLOY,
 0.10mm THICK
 FINISH = 0.7µ-1.3µ NICKEL, GOLD FLASH
 ON CONTACT AND 2.54µ MIN 100%
 MATTE TIN ON FOOT AREA.
 RECOMMENDED WORKING HEIGHT = 3.40mm / MIN FORCE OF 1.2N
 RECOMMENDED MINIMUM WORKING HEIGHT = 2.80mm
 ELECTRICAL:
 CURRENT RATING = 5A
 MECHANICAL:
 DURABILITY = 1500 CYCLES
 ENVIRONMENTAL:
 OPERATING TEMPERATURE = -55°C TO +125°C

SB	6	20.11.13	12234
NAME	ISS.	DATE	C/NOTE
APPROVED:		S.BENNETT	
CHECKED:		S.FLOWER	
DRAWN:		R.ADE	
CUSTOMER REF.:			
ASSEMBLY DRG:			

NOTES:
 1. QUANTITY PER REEL = 2000.
 2. ALL TOLERANCES ARE: X.X = ±0.30mm
 X.XX = ±0.15mm
 UNLESS OTHERWISE STATED.

HARWIN
 www.harwin.com
 technical@harwin.com

THIS DRAWING AND ANY INFORMATION OR DESCRIPTIVE MATTER SET OUT HEREON ARE CONFIDENTIAL AND COPYRIGHT PROPERTY OF THE HARWIN GROUP AND MUST NOT BE DISCLOSED, LOANED, COPIED OR USED FOR MANUFACTURING, TENDERING OR FOR ANY OTHER PURPOSE WITHOUT THEIR WRITTEN PERMISSION.

TOLERANCES
 X = ±1mm
 X.X = ±0.25mm
 X.XX = ±0.10mm
 X.XXX = ±0.01mm
 ANGLES = ±5°
 UNLESS STATED

MATERIAL: SEE ABOVE
FINISH: SEE ABOVE
S/AREA: mm²

TITLE: SMT SHIELD FINGER (4mm) IN TAPE AND REEL
DRAWING NUMBER: S7041-42R
 SHT 2 OF 2