

Table with columns: PART NUMBER, REVISION, DESCRIPTION, FEED TYPE, CONVERT TO, PART NUMBERS REQUIRED. Includes a diagram of the applicator.

APPLICATOR DATA table with columns: CRIMP, SIZE, TYPE. Includes WIRE and INSUL values.

Terminal data and application specifications table with columns: TERMINAL DATA, APPLICATION SPECIFICATION, TERMINALS APPLIED.

WIRE SIZE table with columns: WIRE SIZE, CRIMP HEIGHT, CRIMP HEIGHT REFERENCE SETTING.



- 1. RECOMMENDED SPARE PARTS
2. GREASE BEARING SURFACES LIGHTLY
3. LUBRICATE DAILY PER THE APPLICATOR INSTRUCTION SHEET...
4. APPLICATOR SPECIFIC DATA TO BE ENTERED INTO BLANK MEMORY CHIP...
5. ADJUSTMENT OF THE STRIPPER MAY BE REQUIRED...
6. APPLY PART NUMBER 1-23419-5 LOCTITE TO THREADS...
7. GREASE THREADS, GROOVE AND O-RING...
8. MAGNET, ITEM 166 MUST BE ORIENTED CORRECTLY...
9. CRIMP HEIGHT REFERENCE SETTING WAS THE SETTING USED...
10. TERMINAL PITCH NOT COMPATIBLE WITH MECHANICAL FEED.
11. WHEN ASSEMBLING -6 NON-CRIMP HEIGHT ADJUST APPLICATOR...
12. TERMINAL LUBRICANT IS RECOMMENDED FOR 175032.
13. CUT TO LENGTH AT ASSEMBLY.
14. LOCATE THE FEED FINGER AT THE END OF THE INSULATION BARREL...

\*WARNING
ON INSTALLATION, SET WIRE DISC, ITEM 40 TO LARGEST WIRE SIZE SETTING. USE OF SETTINGS BELOW MINIMUM REQUIRED CRIMP HEIGHT SETTING WILL CAUSE DAMAGE TO CRIMP TOOLING.

Table with columns: PART NO, DESCRIPTION, ITEM NO. Lists parts like 2119957-2 APPLICATOR SHIM PACK.

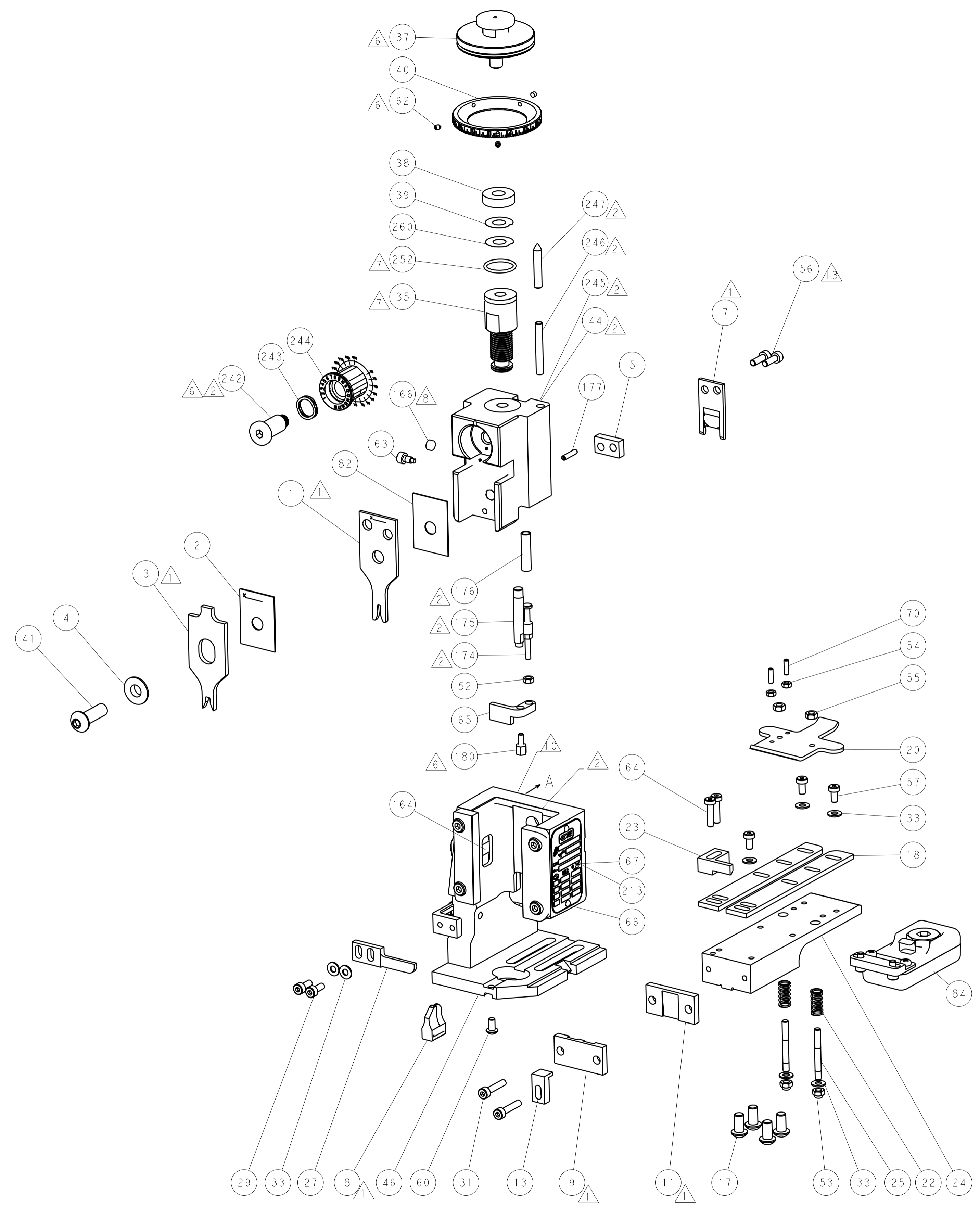
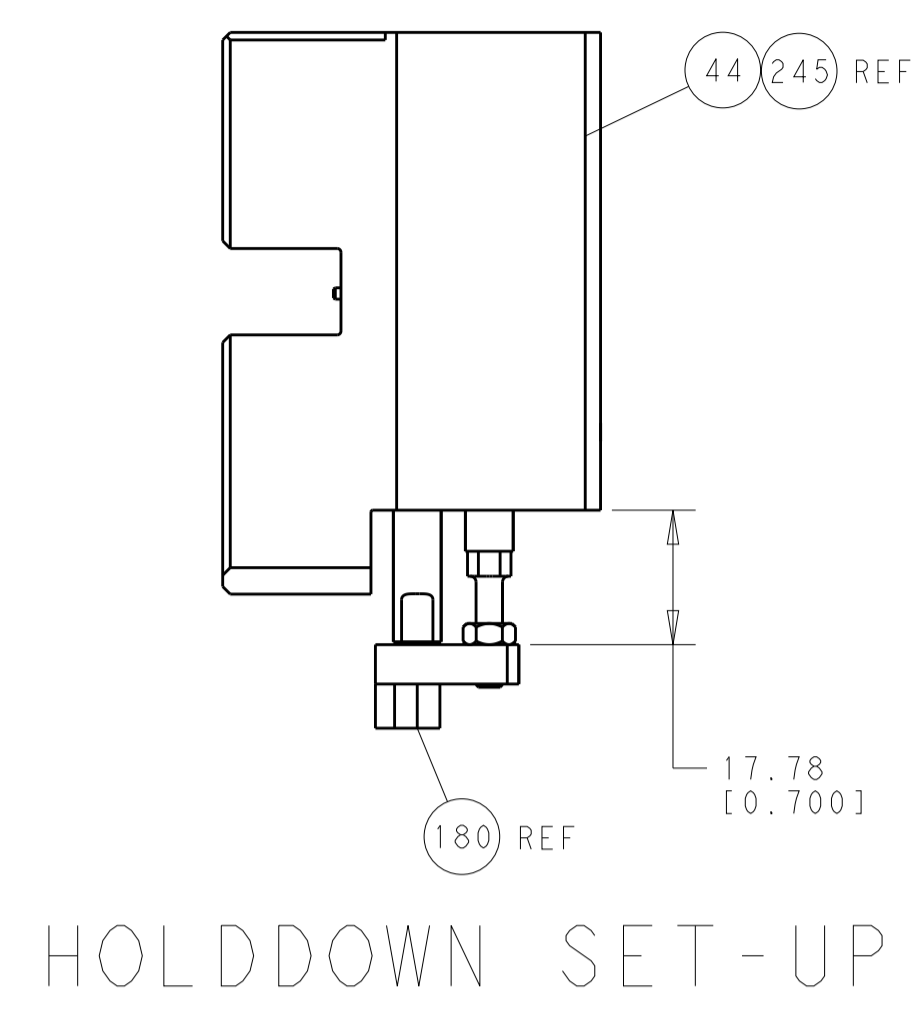
ATLANTIC VERSION
Shown on sheets 1 of 4 & 2 of 4
(Pacific version shown on sheets 3 of 4 & 4 of 4)

SET UP GAUGE, DIST, LOC, REVISIONS table with columns: REVISIONS, DESCRIPTION, DATE, DWN, APVD.

Main parts list table with columns: PART NO, DESCRIPTION, ITEM NO. Lists numerous components like BUSHING, FEED CAM, SPRING, etc.

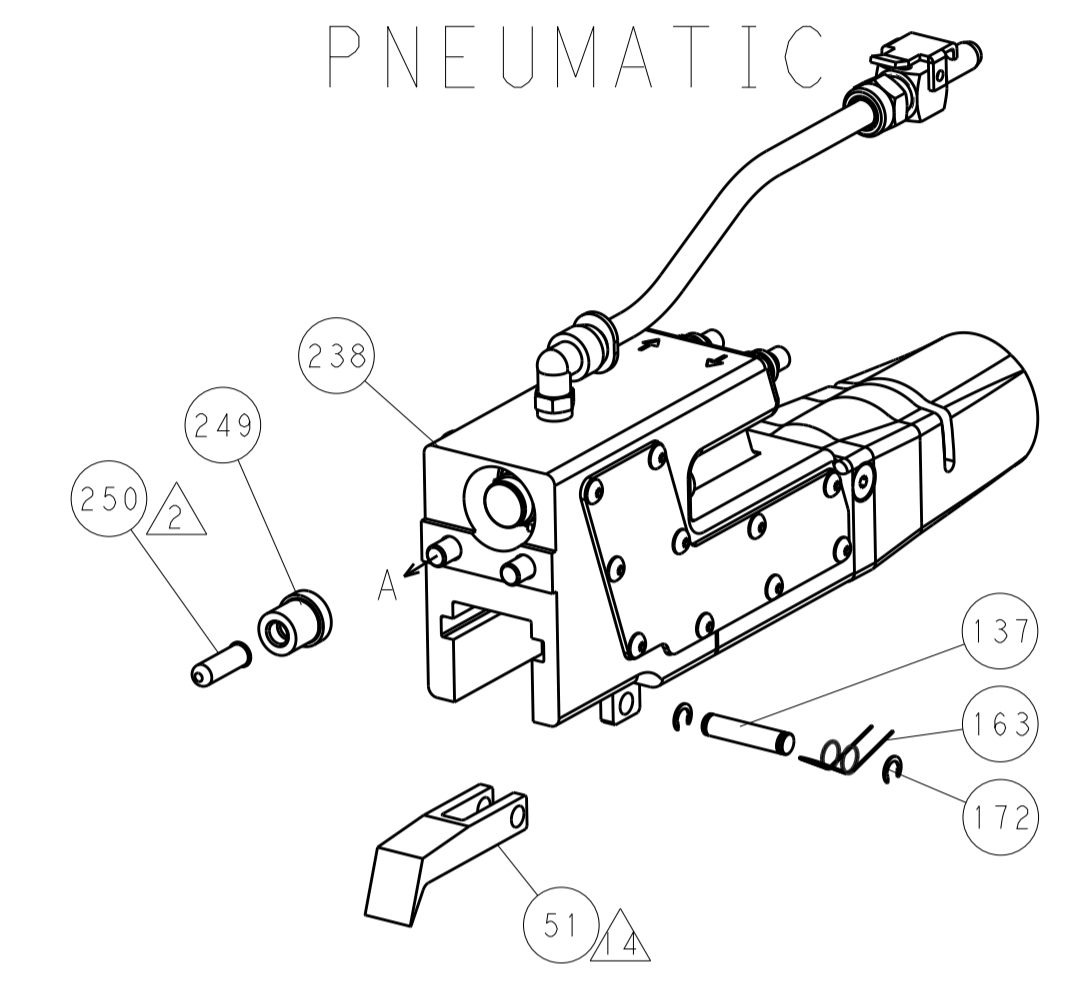
Product information block including dimensions, tolerances, material, finish, weight, and customer accessible production drawing details.

LOC		DIST		REVISIONS			
A	66	P	LTM	DESCRIPTION	DATE	DWN	APVD
		-	-	SEE SHEET 1			

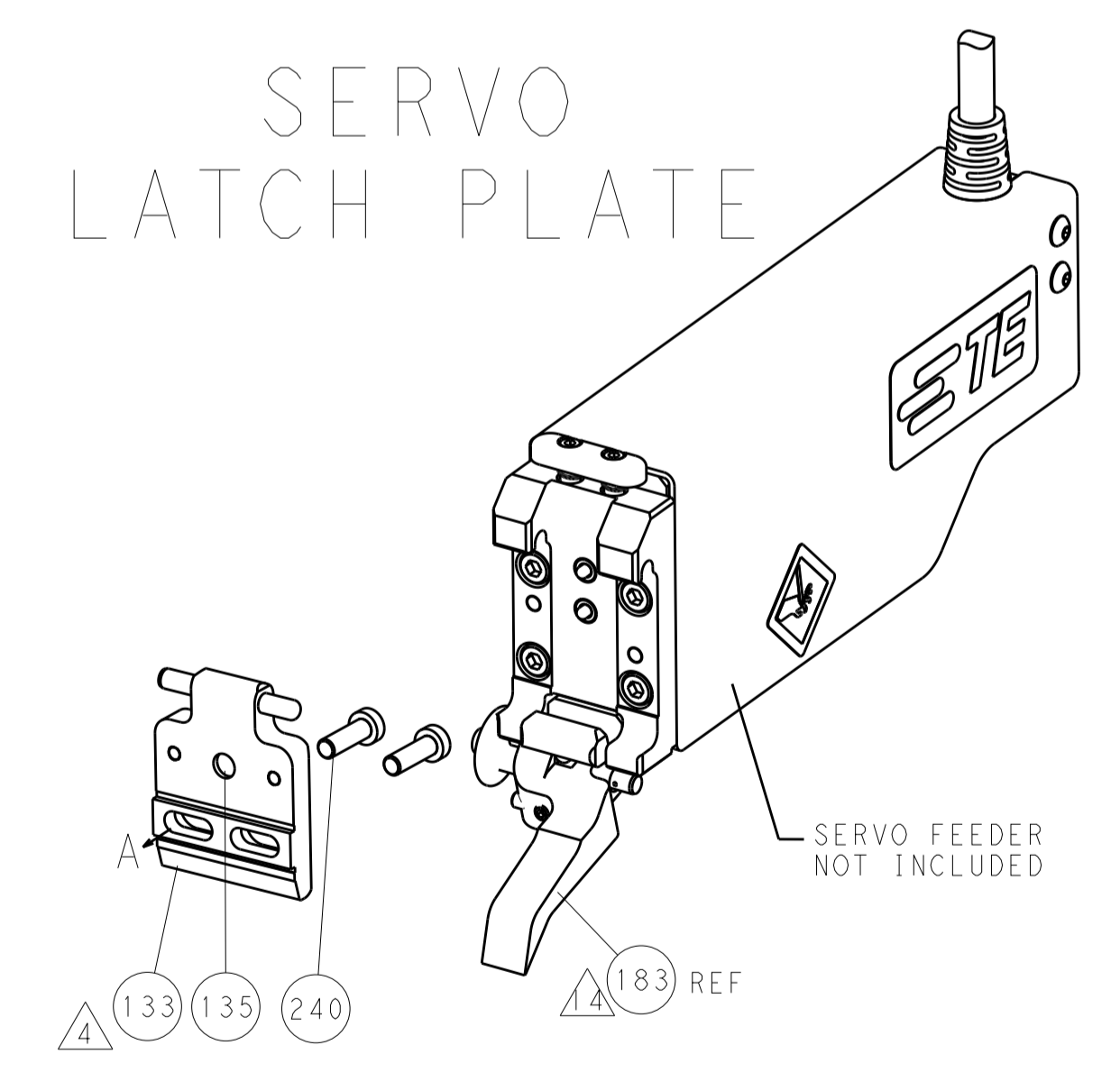


FEED TYPE

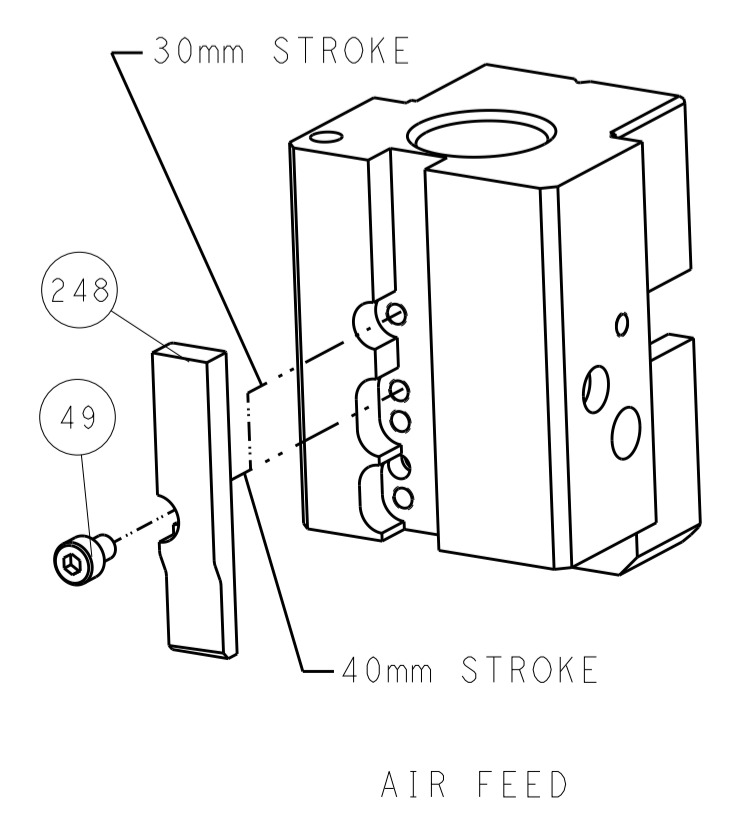
PNEUMATIC



SERVO LATCH PLATE



CAM POSITION

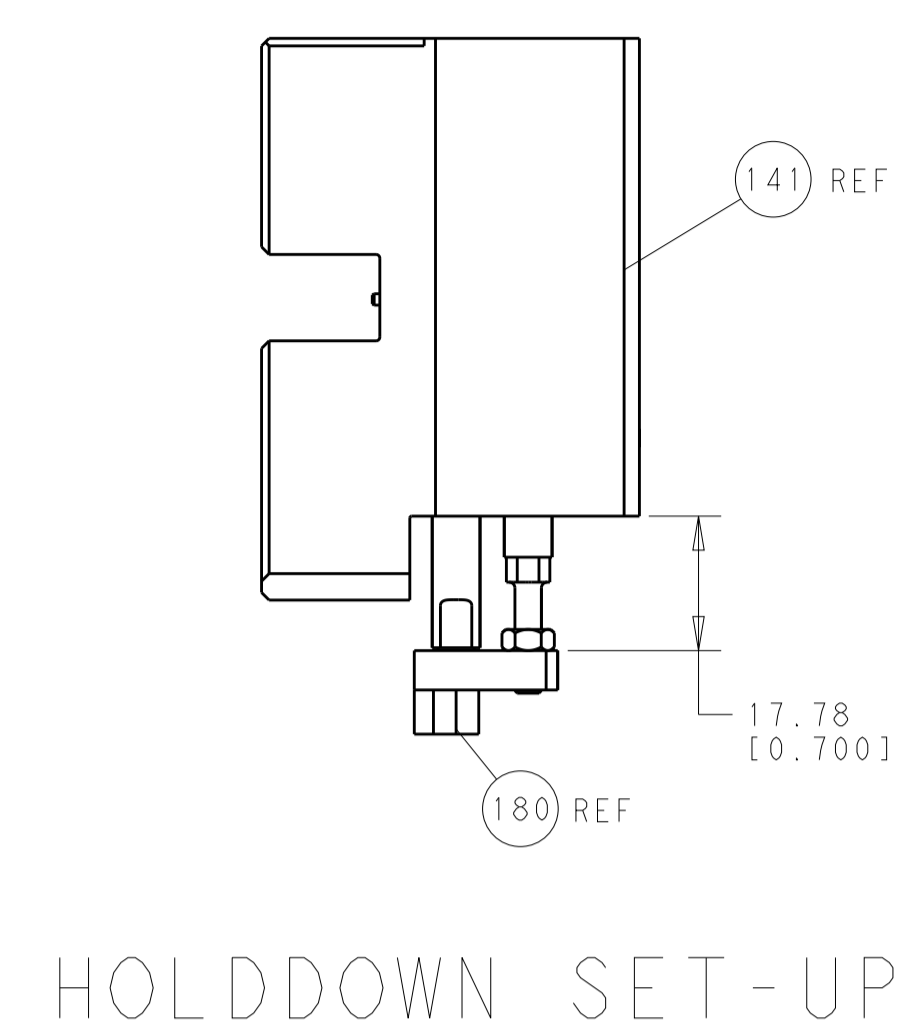


ATLANTIC VERSION  
Shown on sheets 1 of 4 & 2 of 4  
(Pacific version shown on sheets 3 of 4 & 4 of 4)

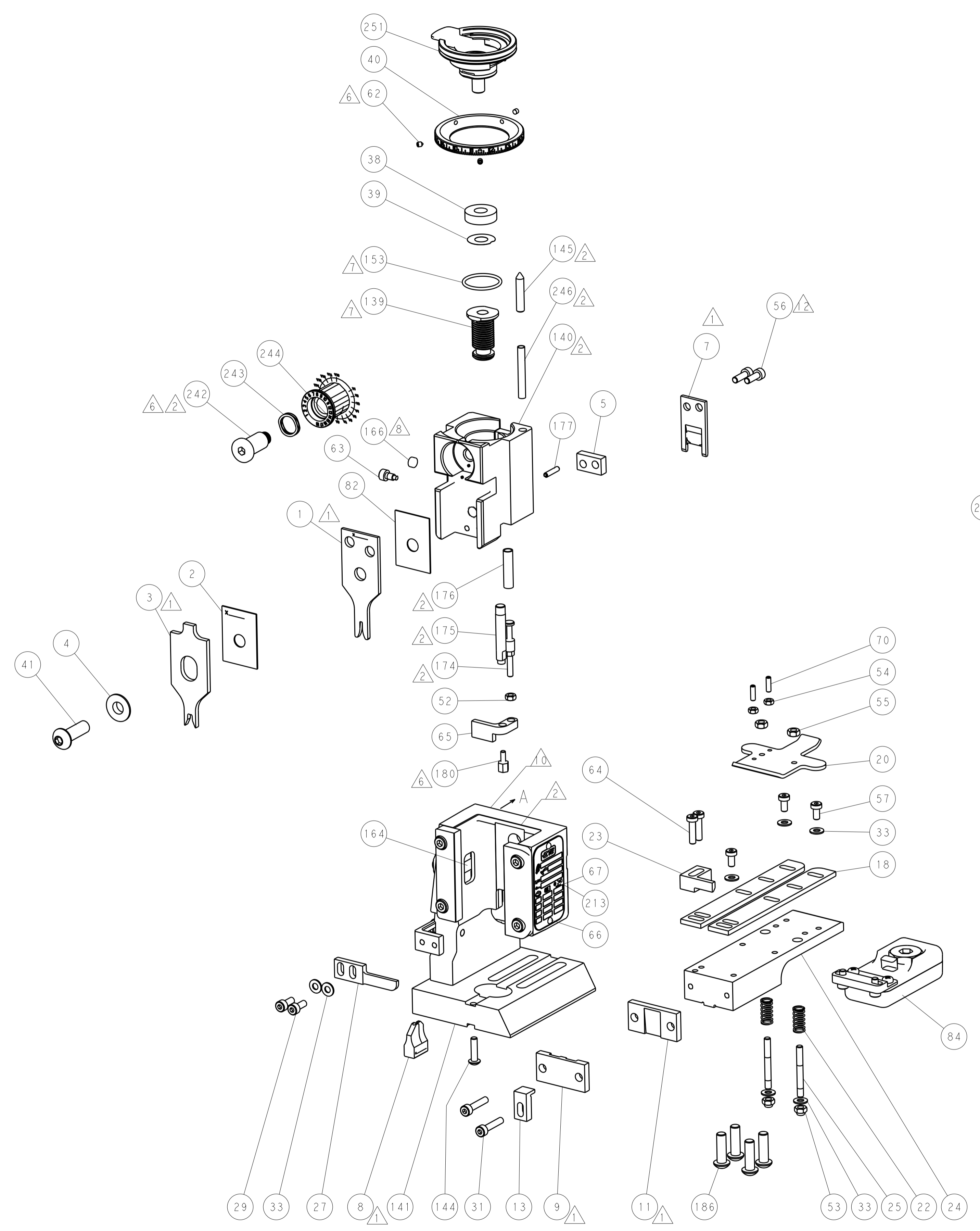
<small>THIS DRAWING IS UNPUBLISHED. RELEASED FOR PUBLICATION. COPYRIGHT 20 BY TYCO ELECTRONICS CORPORATION. ALL RIGHTS RESERVED.</small>		DWN: R. HUANG 07FEB2012 CHK: S. XI 07FEB2012 APVD: S. XI 07FEB2012	TE Connectivity Harrisburg, PA 17105-3608
DIMENSIONS: mm 		TOLERANCES UNLESS OTHERWISE SPECIFIED: 0 PLC ±.5 1 PLC ±0.5 2 PLC ±0.13 3 PLC ±0.013 4 PLC ±0.001 ANGLES ±.0001	NAME: Ocean End Feed Applicator SIZE: A1 CAGE CODE: 00779 DRAWING NO: C=2150047 RESTRICTED TO: -
MATERIAL: - FINISH: -		WEIGHT: - SCALE: 1:1	SHEET 2 OF 4 REV A



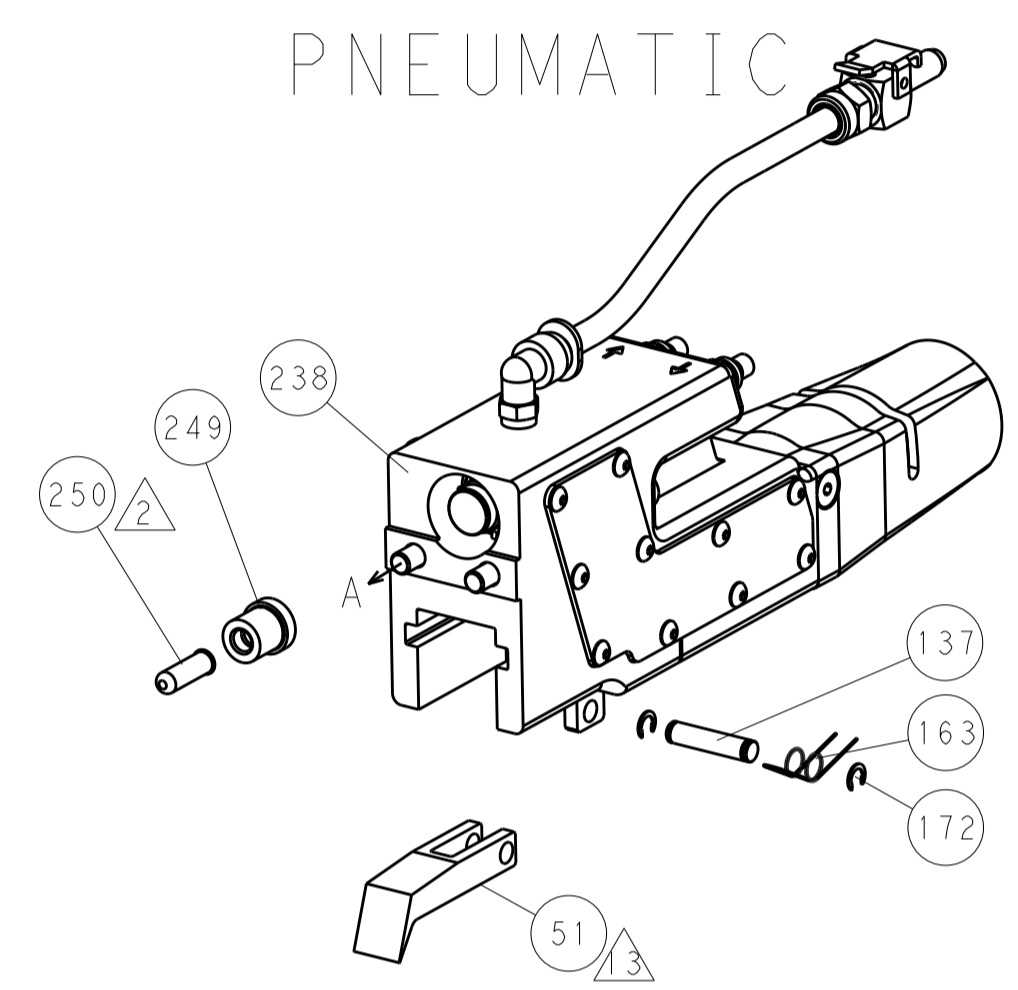
LOC		DIST		REVISIONS			
A	66	P	LTM	DESCRIPTION	DATE	DWN	APVD
		-		SEE SHEET 1			



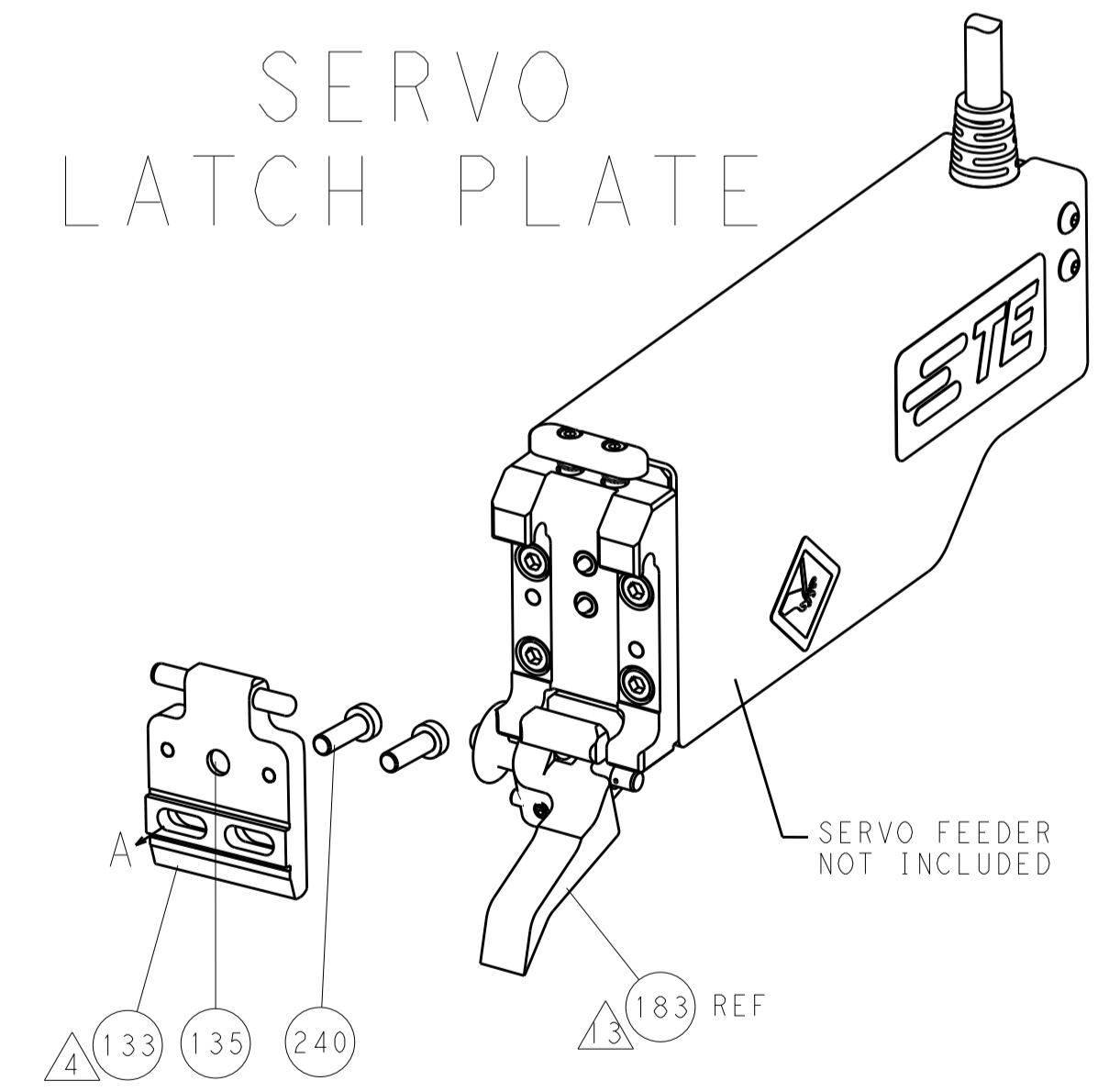
FEED TYPE



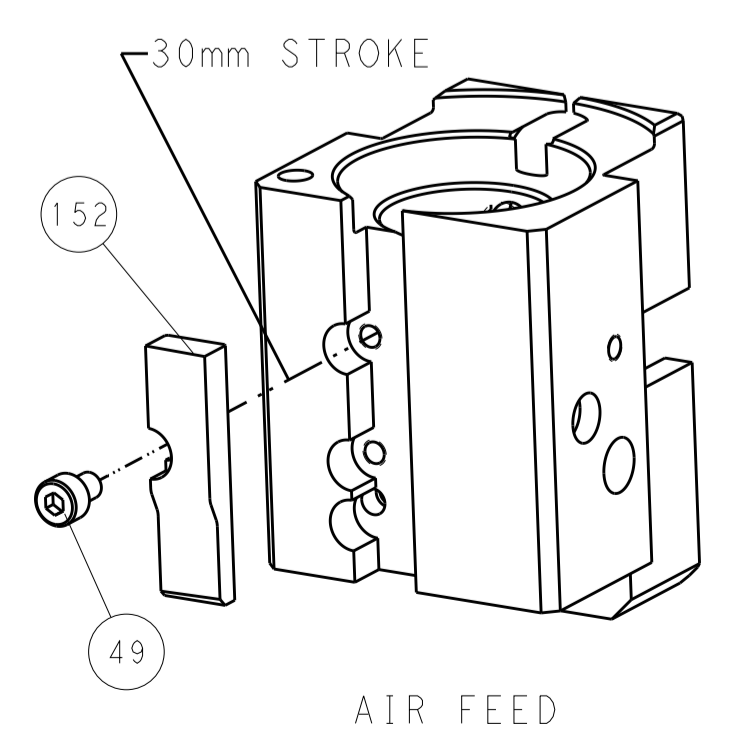
PNEUMATIC



SERVO LATCH PLATE



CAM POSITION



PACIFIC VERSION  
 Shown on sheets 3 of 4 & 4 of 4  
 (Atlantic version shown on sheets 1 of 4 & 2 of 4)

DIMENSIONS:		TOLERANCES UNLESS OTHERWISE SPECIFIED:		DWN R. HUANG 07FEB2012		STE TE Connectivity Harrisburg, PA 17105-3608	
mm	0 PLC ±0.5	1 PLC ±0.5	2 PLC ±0.13	3 PLC ±0.013	4 PLC ±0.0013	APVD S. XI 07FEB2012	NAME Ocean End Feed Applicator
MATERIAL	FINISH	ANGLES	WEIGHT	SCALE	1:1	SHEET 4 OF 4	REV A
Customer Accessible Production Drawing				RESTRICTED TO			