

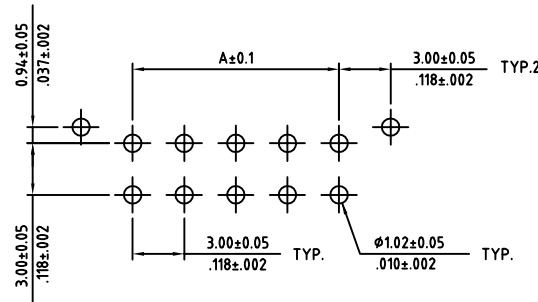
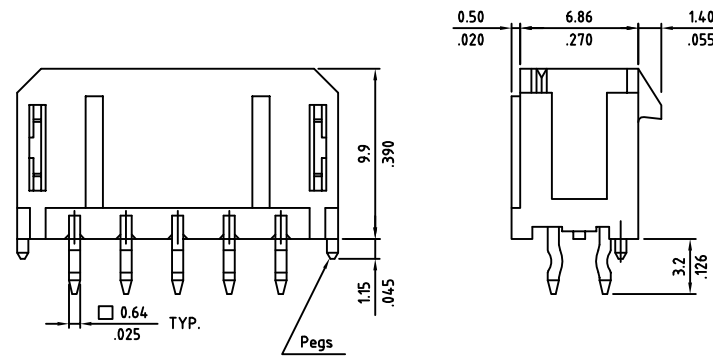
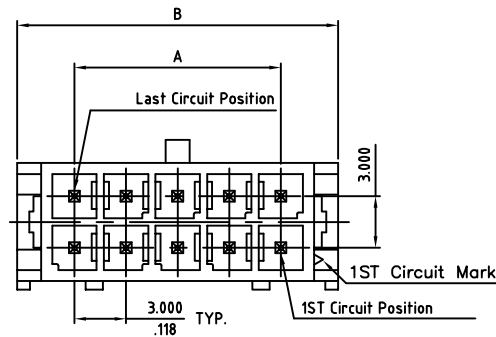
SIGN	DATE	DESCRIPTION	APPROVER
			Tony
<i>THIS IS CAD DRAWING, DO NOT REVISE MANUALLY!!!</i>			

Circuits	Dimension	
	A	B
02	—	6.7(.264)
04	3.00(.118)	9.7(.382)
06	6.00(.236)	12.7(.500)
08	9.00(.354)	15.7(.618)
10	12.00(.472)	18.7(.657)
12	15.00(.591)	21.7(.854)
14	18.00(.709)	24.7(.972)
16	21.00(.827)	27.7(1.091)
18	24.00(.945)	30.7(1.209)
20	27.00(1.063)	33.7(1.327)
22	30.00(1.181)	36.7(1.445)
24	33.00(1.299)	39.7(1.563)

**SPECIFICATIONS**

Body: Nylon 6T  
 Color: Black  
 Contact: Brass  
 Plating: Sn over Ni (Standard)  
other plating available, may require MOQ  
 Flammability: UL94V-0  
 Current: 5A for AWG#20-22  
           4A for AWG#24  
           3A for AWG#26  
           2A for AWG#28  
           1A for AWG#30  
 Voltage: 250V AC(r.m.s.)  
 Dielectric Withstanding: 1500 VAC for one minute  
 Insulation Resistance: >1000 MΩ  
 Contact Resistance: <10 mΩ  
 Operating Temperature: -40°C ± 105°C

RoHS Compliant



Recommended P.C. Board layout

THESE DRAWINGS AND SPECIFICATIONS ARE THE PROPERTY OF ON-SHORE TECHNOLOGY, INC. AND SHALL NOT BE REPRODUCED, COPIED OR USED IN ANY MANNER WITHOUT THE PRIOR WRITTEN CONSENT OF ON-SHORE TECHNOLOGY, INC.



TITLE		300HBT2V series, 3.00mm latch'n lock, vertical, dip solder header, dual row, with pegs			
PART NO.	300HBT2VXX (xx - circuits)	DWG NO.	300HBT2VXX.DWG		
APPROVED	CHECKED	DESIGNED	DRAWN	4050	
Sam 2005.12.14	Tony 2005.12.14	Ralph 2005.12.14	Lin 2005.12.14	Tolerance	
				UNIT: mm/inches	X. ±0.30/.012
				SCALE: NONE	X.X ±0.20/.008
SHEET: 01/01				REV.: A	X.XX ±0.10/.004
					X° ±1°