

REVISIONS					
REV	ECO	DESCRIPTION	DATE	BY	APPR
A1	-	FIRST RELEASE	May/22/17	Regan	Tommy
A2	-	MODIFY THE CURRENT RATING	Jul/10/17	White	Tommy

NOTES: UNLESS OTHERWISE SPECIFIED

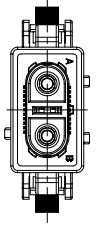
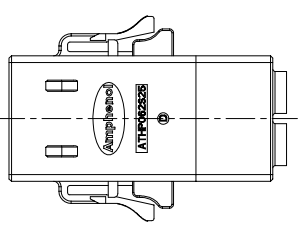
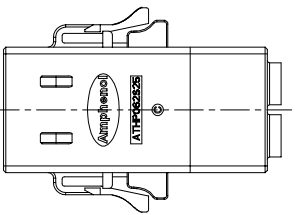
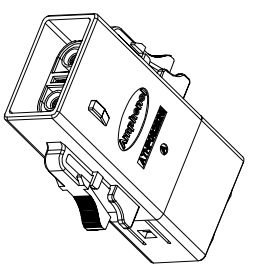
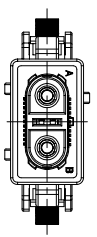
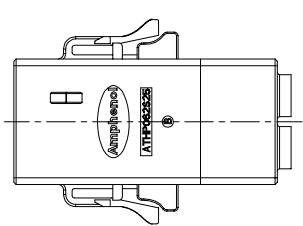
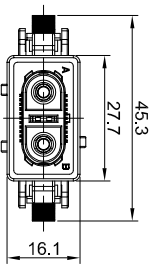
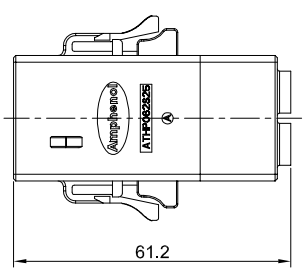
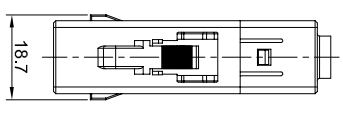
1. MATERIAL:

- 1.1 HOUSING: THERMOPLASTIC UL 94V0
- 1.2 SEAL: SILICONE RUBBER
- 1.3 POWER CONTACT: COPPER ALLOY, Tin PLATED
- 1.4 SHIELDING: COPPER ALLOY, NICKLE PLATED

2. SPECIFICATIONS:

- 2.1 CURRENT RATING: 6.0mm2 (MS10B23XX) @35 AMPS
4.0mm² (SS12A1XX-10) @25 AMPS
2.5mm² (SS12A1XX) @20 AMPS
- "XX" DENOTES DIFFERENT PLATING.
- 2.2 VOLTAGE RATING: 1000 V AC/DC
- 2.3 OPERATING TEMPERATURE: 40°C TO +130°C
- 2.4 DIELECTRIC WITHSTANDING VOLTAGE: LESS THAN 2 MILLAMPS CURRENT LEAKAGE @ 3000 VOLTS AC.
- 2.5 INSULATION RESISTANCE: 500 MEGOHMS MIN@25±5°C.
- 2.6 DEGREE OF PROTECTION: IP67 (MATED CONDITION)
- 2.7 MATING CYCLE DURABILITY: 100 CYCLES
- 2.8 RoHS COMPLIANT

3. ALL DIMENSIONS ARE FOR REFERENCE USE ONLY.



A Key

B Key

C Key

D Key

PART NUMBER	Key type	Cable OD Range
ATHP062S25EEL-S1	A Key	
ATHP062S25EEL-B-S1	B Key	6.5-7.5 mm
ATHP062S25EEL-C-S1	C Key	
ATHP062S25EEL-D-S1	D Key	
ATHP062S25EEL-S2	A Key	
ATHP062S25EEL-B-S2	B Key	4.8-5.8 mm
ATHP062S25EEL-C-S2	C Key	
ATHP062S25EEL-D-S2	D Key	

QUANTITY	PART NUMBER	DESCRIPTION	ITEM
MATERIALS LIST			

UNLESS OTHERWISE SPECIFIED			
DRAWN:	DATE:	SIGNATURES	
1 P. DEC 20/09	Jul/10/17	White	Jul/10/17
3 P. DEC 20/09	Jul/10/17	Tommy	Jul/10/17
Factoris, s.r.l.	Engineer:	Tommy	Approval:
3) Note reference =	CUSTOMER:	Tommy	Jul/10/17

MATERIAL SPECIFICATIONS:			
THIS DRAWING IS SUPERSEDED BY THE LATEST REVISIONS. SPECIFICATIONS AND PERFORMANCE DATA ARE SUBJECT TO CHANGE WITHOUT NOTICE. THE MANUFACTURING CORPORATION HAS NO RESPONSIBILITY FOR REPRODUCTION ERRORS OR MANUFACTURING VARIATIONS.			
SCALE:	NONE	SHEET:	1 OF 1

Amphenol
 Site Systems - www.amphenol-site.com
 44724 Morley Drive
 Clinton Township, MI 48036

ATHP - PLUG, 2 PIN, HVL WITH EMC SHIELDING