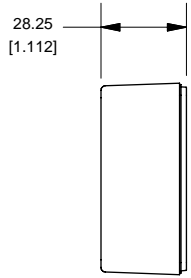
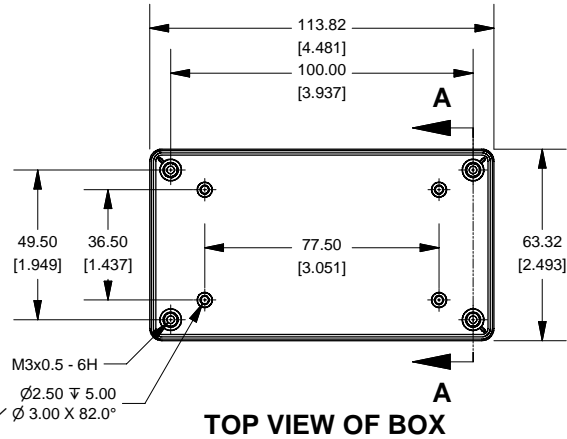


1591XXBSFL Enclosure



SIDE VIEW OF BOX

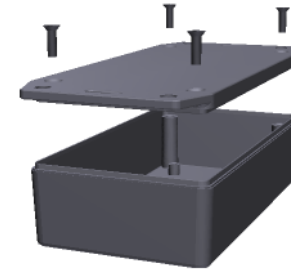


TOP VIEW OF BOX

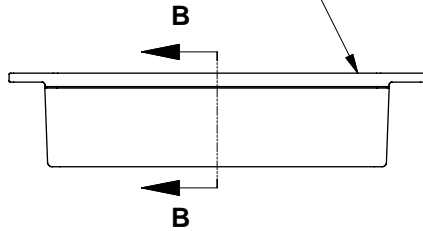
AVERAGE WALL THICKNESS
2.00
[.079]



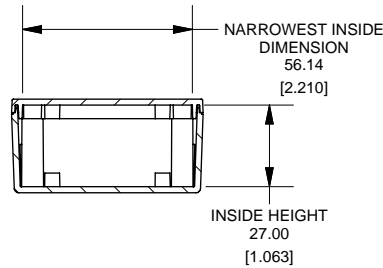
SECTION A-A



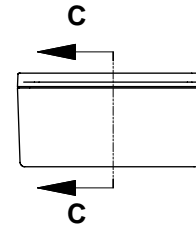
Cover Screws #4 x 1/2" Self-Tapping Screws



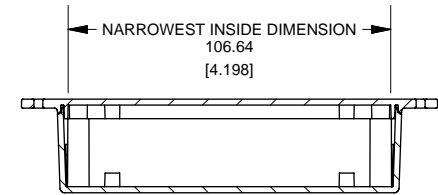
SIDE VIEW OF ENCLOSURE



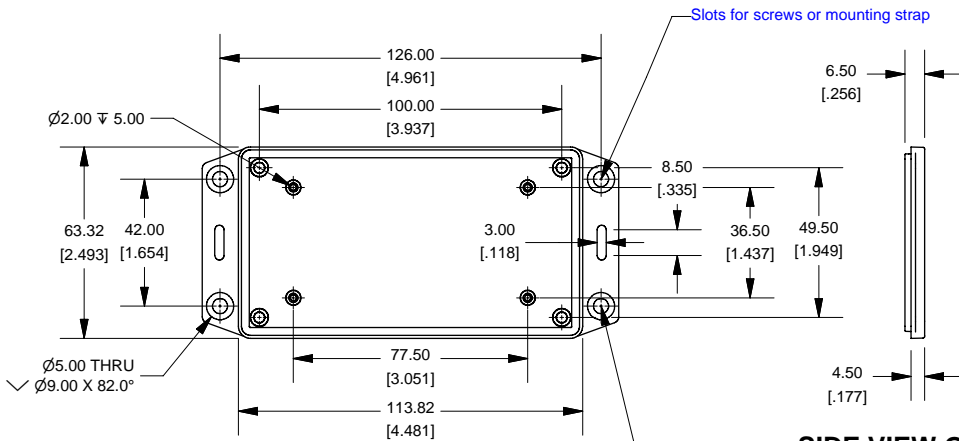
SECTION B-B



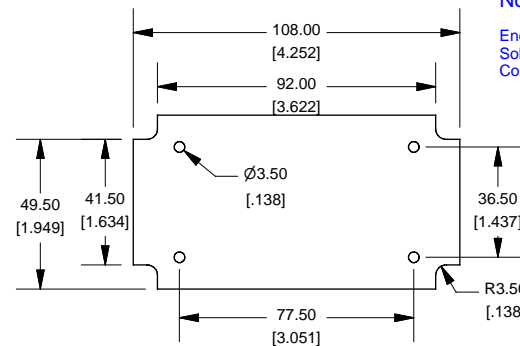
END VIEW OF ENCLOSURE



SECTION C-C



BOTTOM VIEW OF LID



SIDE VIEW OF LID

Note:

Enclosures can be Factory Modified (Milling, Drilling, Printing etc.)
Solid models of this enclosure available in STEP or IGES.
Contact Factory mjm@hammondmfg.com

| NOTE | |
|---|----------------------|
| Enclosure molded from GPABS UL-94HB plastic | |
| Other materials / colours available. Consult factory. | |
| 1591XXBSFL | |
| 1591XXBSFL Enclosure | |
| Black - RAL 7011 | 1591XXBSFLBK |
| ACCESSORIES | |
| Black Cover Screws | 1591TS100BK |
| PCB Screws | 1593ATS50 (pkg 50) |
| [#4 x 1/4" self-tapping (6.4mm)] | 1593ATS100 (pkg 100) |

Max Size PCB. Fits in Box or in Lid.
Not supplied with Enclosure



HAMMOND
MANUFACTURING™

www.hammondmfg.com