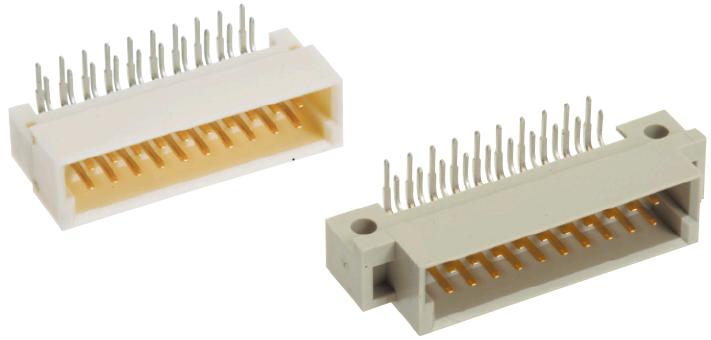


Number of contacts

20

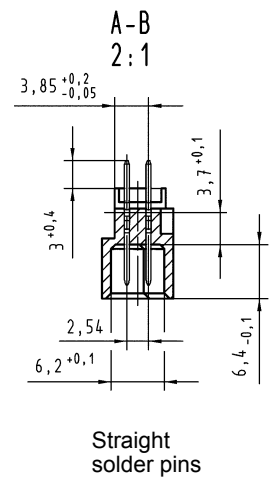
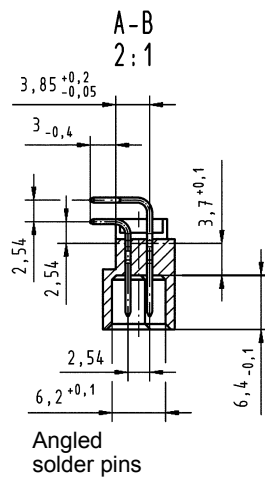
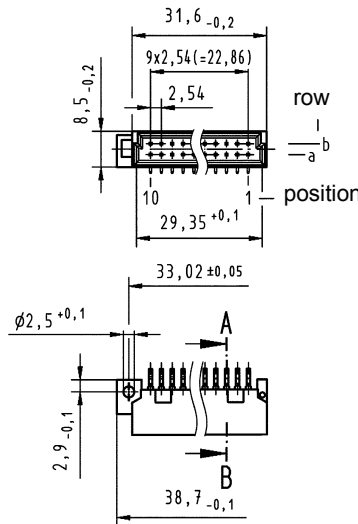


Male connectors

Identification	No. of contacts	Contact arrangement	Part number 3	Performance levels according to IEC 60 603-2. 2	1
Male connector with angled solder pins with fixing flange	20		Performance level 3 on request	09 24 120 6921 09 24 320 6921 ^{b)}	Performance level 1 on request
with fixing flange, THR	20			09 24 120 6919 ^{d)}	
without fixing flange	20			09 24 120 6571	
without fixing flange, THR	20			09 24 120 6579 ^{d)}	
Male connector with straight solder pins with fixing flange	20			09 24 120 6922	

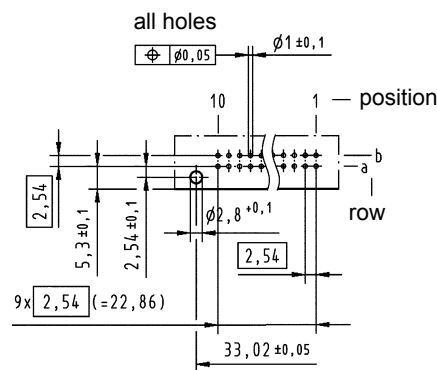
Dimensions

with fixing flange without fixing flange

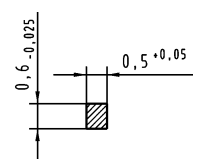


Board drillings

Mounting side



Cross section of solder terminations



Cross area (A) of contacts
row a, b: A = 0.29 - 0.33 mm²

Dimensions in mm

Other contact arrangements as well with lagging/leading pins on request

^{b)} Connectors with snap-in clips see chapter 00

^{d)} CTI > 400