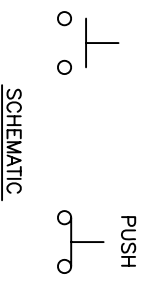
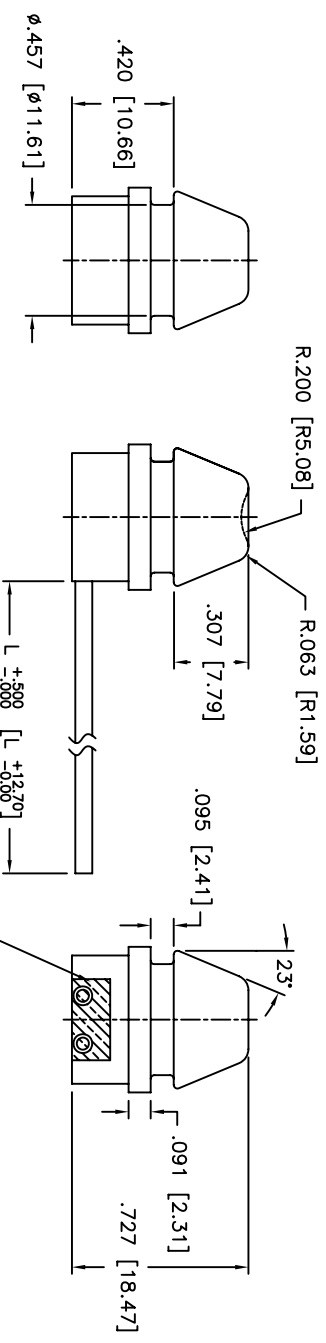
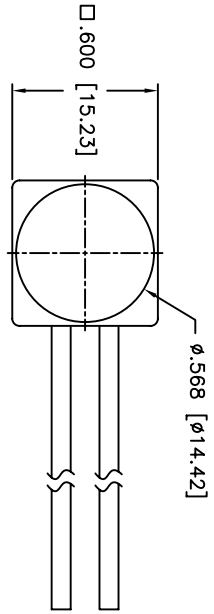


THIS DOCUMENT IS THE PROPERTY OF APDM COMPONENTS AND SHALL NOT BE COPIED, REPRODUCED, DISCLOSED OR SALE WITHOUT PERMISSION OF A DULY AUTHORIZED REPRESENTATIVE OF APDM COMPONENTS INC.



PANEL CUT-OUT
RECOMMENDED PANEL THICKNESS
.091 [2.31] ±.002 [0.05]

DATE	SYM	REVISION RECORD	DWN.	CK.
12/07	A	ECO# A	CD	PD

DESCRIPTION:
ENVIRONMENTALLY SEALED PANEL MOUNT PUSHBUTTON WITH BLACK 20AWG UL 1007 WIRE LEADS
MATERIALS:
SWITCH BOOT: NEOPRENE
CONTACT DISK: PHOSPHOR BRONZE, SILVER CLAD
TERMINALS: BRASS, SILVER PLATED
ENCAPSULANT: EPOXY

SPECIFICATIONS:
CONTACT RATINGS: 0.4 VA MAX.
MINIMUM CURRENT: 1.0mA
INSULATION RESISTANCE: 100 megohms MIN. (500 VDC)

DIELECTRIC STRENGTH: 250 VAC FOR 1 MINUTE
CONTACT RESISTANCE: 100 milliohms MAX.
ELECTRICAL LIFE: 100,000 CYCLES MIN.
CONTACT BOUNCE: LESS THAN 10 msec
SHOCK TEST: MIL-STD-202F METHOD 213B
VIBRATION TEST: MIL-STD-202F METHOD 201A
ENVIRONMENTAL SPECIFICATIONS:
SEAL TEST: MIL-STD-202G, TEST CONDITION D
ROHS COMPLIANT

PPR3F***
BODY COLOR: _____ WIRE LENGTH DIM. L:
2 = BLACK 06 = 6.00 [152.0]
3 = GREEN 12 = 12.00 [304.0]
5 = YELLOW
6 = RED

<p>0A. INSECT: DESIGNATES CRITICAL DIMENSION</p>		<p>63 Neck Rd. 01835 Haverhill, MA Tel: 978-372-5554 Fax: 978-372-5554</p>		<p>PRN: CJD BR: _____ OR: PJD</p>
<p>TOLERANCES (UNLESS OTHERWISE SPECIFIED) X.XX = ±.001 [0.025] X.X = ±.0008 [0.20] X.XXX = ±.0008 [0.02] ANGLE = 30.5°</p>	<p>DESIGN: 1 OF 2 SHEET: B SCALE: 2:1</p>	<p>THIRD ANGLE PROJECTION</p>	<p>DATE: 12/18/07 DRAWING NO: RPR3F***</p>	<p>REV: A</p>
<p>DO NOT SCALE DIMENSIONS</p>		<p>TITLE: SEALED MOMENTARY PUSHBUTTON SWITCH</p>		

THIS DOCUMENT IS THE PROPERTY OF APDM COMPONENTS AND SHALL NOT BE COPIED, REPRODUCED, DISCLOSED OR SALE WITHOUT PERMISSION OF A DULY AUTHORIZED REPRESENTATIVE OF APDM COMPONENTS INC.