

THIS DRAWING IS UNPUBLISHED. RELEASED FOR PUBLICATION
 © COPYRIGHT BY TYCO ELECTRONICS CORPORATION. ALL INTERNATIONAL RIGHTS RESERVED.

LOC	DIST	REVISIONS					
FT	0	P	LTR	DESCRIPTION	DATE	DWN	APVD
		A		REVISED PER ECO-10-013614	13OCT10	HMR	CR

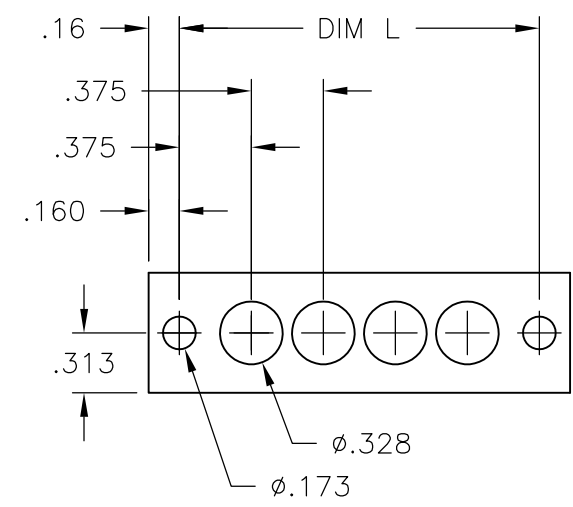
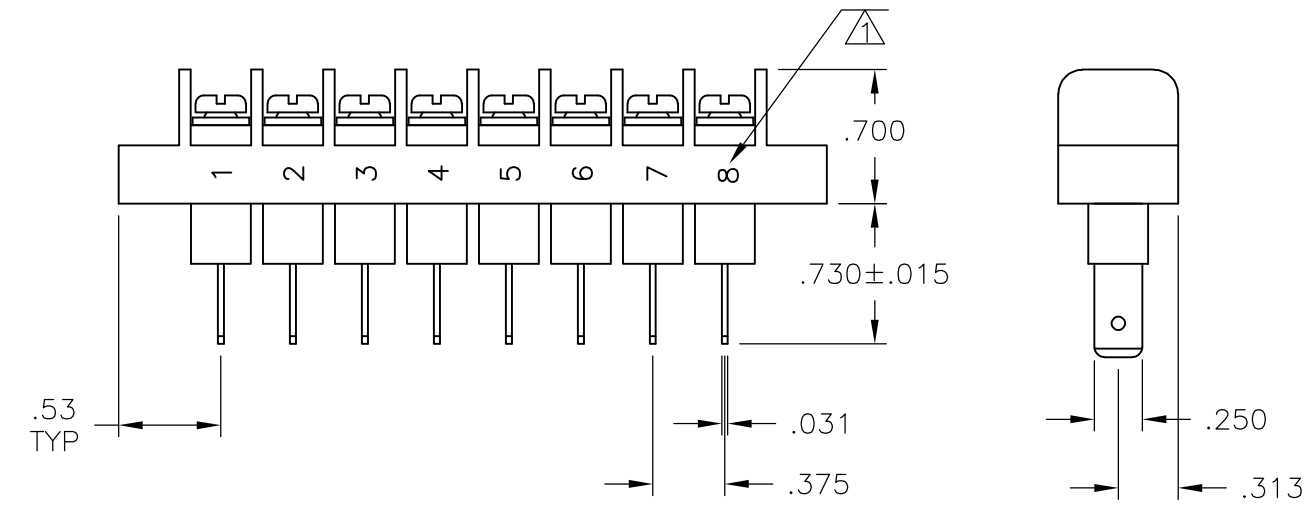
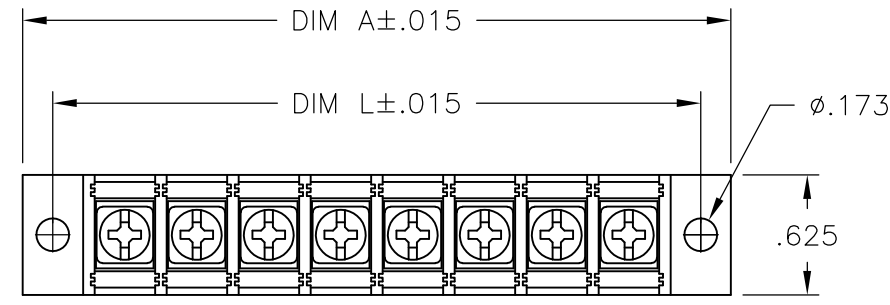
NOTES:

MATERIAL:
 HOUSING: THERMOPLASTIC, UL94V-0, BLACK.
 TERMINALS: BRIGHT TIN OVER COPPER ALLOY.
 SCREWS: #6-32 STEEL, ZINC PLATING W/ CLEAR CHROMATE, EXCEPT WHERE NOTED OTHERWISE.

ELECTRICAL:
 RATED CURRENT UL/CSA:
 CLASS C: 20A, 300V.
 CLASS D: 5A, 600V.
 WIRE RANGE: 12-22 AWG.

MECHANICAL:
 RECOMMENDED TORQUE: 7 IN-LB.
 OPERATING TEMP.: 105°C MAX.

△ WHITE INK MARKING.



MOUNTING PANEL LAYOUT

3.375	3.689	8	JC6-Q308-08-131	7-1437665-0
DIM. L	DIM. A	NO. OF POS.	CATALOG NUMBER	PART NO.

THIS DRAWING IS A CONTROLLED DOCUMENT.		DWN	S SCHLEGEL	3/7/05	Tyco Electronics Corporation Harrisburg, PA 17105-3608		
DIMENSIONS: INCHES		CHK	S YODER	3/7/05			
TOLERANCES UNLESS OTHERWISE SPECIFIED:		APVD	S YODER	3/7/05	NAME		
0 PLC	± -	PRODUCT SPEC		JC6-Q308-08-131 ASSEMBLY			
1 PLC	± -	APPLICATION SPEC		SIZE			
2 PLC	± .02	MATERIAL		CAGE CODE		DRAWING NO	
3 PLC	± .010	FINISH		A300779		G-7-1437665-0	
4 PLC	± -	MATERIAL		WEIGHT		RESTRICTED TO	
ANGLES	± -	MATERIAL		-		-	
CUSTOMER DRAWING		SCALE		SHEET		REV	
		NTS		1 OF 1		A	