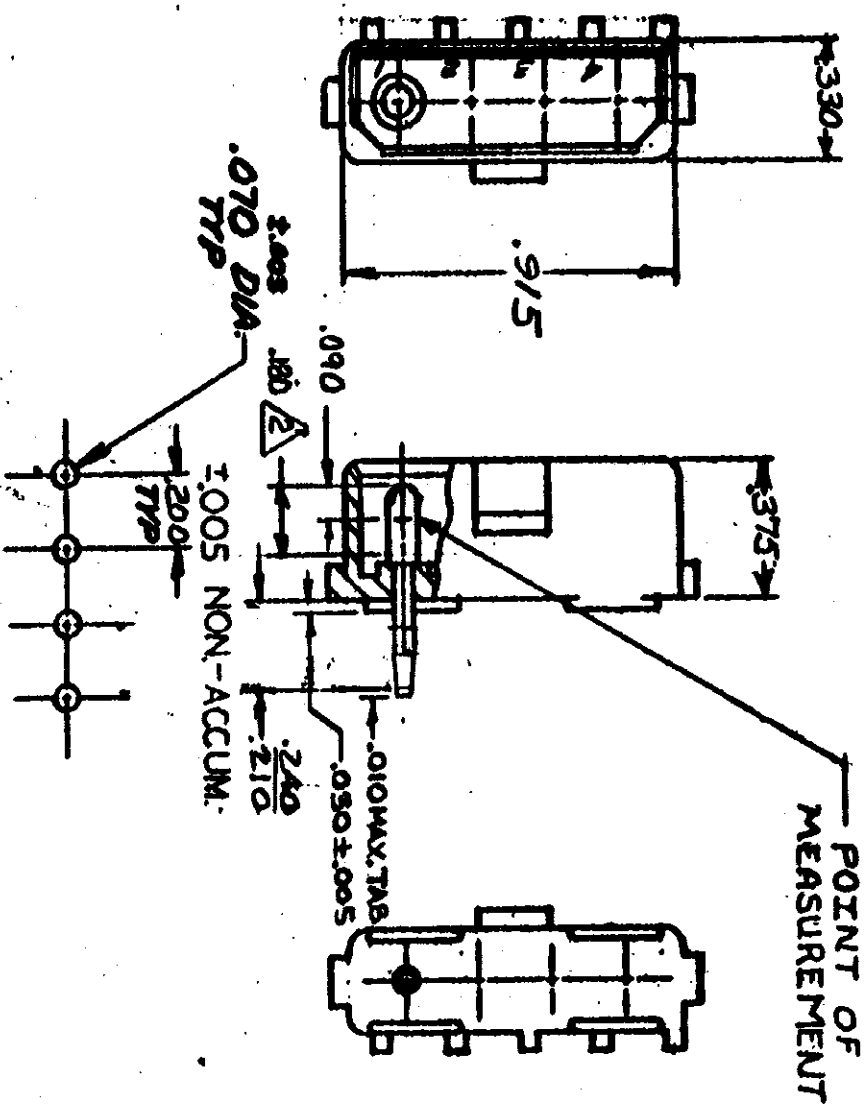


DIMENSIONS IN INCHES. DO NOT SCALE PRINT.



RECOMMENDED LAYOUT FOR
125 THICK P.C BOARD

1. PARTS COMPLY WITH AMP SOLDERABILITY SPEC. NO 109-11-3 CONTACT IS PLATED OVERALL WITH .000050 NICKEL, THEN .000030 GOLD OVER CONTACT LENGTH INDICATED AND MATTE TIN ON SOLDER TAIL END.

DISOLETE H.1,2,13	Rev	42-
14,15,16,17,18,19	RS	86
12,23,32,42,52,62,73		
82,92 CM 473		

REV	DESCRIPTION	BY	CHK	DATE
K1	RESTORED	RS	RS	4/1/85
K	REV PER. M-7375	RS	RS	8/24/83
J	REV PER. M-7284	RS	RS	2/14/83
H	ADDED NOTE 2, M-6694	RS	RS	11/25/81
G	REMOVED STICKER M-6543	RS	RS	8/17/81
F	ADDED DIMENSION M-5934	RS	RS	7/11/80
E	REV TAIL LENGTH M-5894	RS	RS	5/28/79
D	REVISED M-4161	RS	RS	3/17/77
C	ECN M-3871	RS	RS	9-76
B	ECN M-3452	RS	RS	7/8/76
A	ECN M-3156	RS	RS	2/17/74

REV	DESCRIPTION	BY	CHK	DATE
350544				

REV	DESCRIPTION	BY	CHK	DATE
350544-1	NYLON - NATURAL COPPER ALLOY PRE-TIN			
350544-2	NYLON - NATURAL COPPER ALLOY - GOLD			

ASSEMBLY NO. HSG. MATL & COLOR PIN MATL & FINISH

© 1973 BY AMP INCORPORATED. ALL RIGHTS RESERVED.
AMP PRODUCTS COVERED BY PATENTS AND/OR PATENT PENDING.

3-30-73

J. Kunkle 4/10/73

4 CIRCUIT MATE-N-LOK P.C. BOARD HEADER

SEE TABLE

AMP INCORPORATED

CUSTOMER COPY REFERENCE ONLY