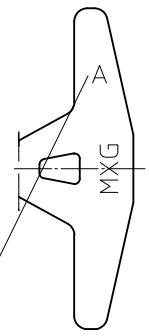


NOTE:  
- CRIMPING SPECIFICATION ACCORDING TO AS-64324-001

2	BOX TERMINAL	STAINLESS STEEL thickness : 0.15 mm
1	BODY TERMINAL	HIGH CONDUCTIVITY COPPER ALLOY thickness : 0.35 mm
MARK	DESIGNATION	MATERIAL

MATERIAL NUMBER	CONTACT AREA	CRIMPING AREA PLATING	UNDERLAYER	CRIMPING RANGE (mm <sup>2</sup> )	Identification									
					A	B	rC	D	P1	P2	P3	P4	P5	P6
0643241119	Au 1.27μ MINI	Sn	Ni	>3 TO 5	5.0	5.2	1.3	1.55	0.5	0.95	0.4902	D		
0643241019	Sn	Sn	Ni								0.4795			
0643241129	Au 1.27μ MINI	Sn	Ni	>2 TO 3	4.1	4.4	1.0	1.45	0.5	0.95	0.4604	C		
0643241029	Sn	Sn	Ni								0.4470			
0643241139	Au 1.27μ MINI	Sn	Ni	>1 TO 2	4.1	3.5	0.9	1.3	0.6	1.3	0.4274	B		
0643241039	Sn	Sn	Ni								0.4191			
0643241149	Au 1.27μ MINI	Sn	Ni	0.50 TO 1	2.8	2.6	0.7	1.1	0.6	1.3	0.3916	A		
0643241049	Sn	Sn	Ni								0.3815			

crimp range identification



(SKC)	COTES CARACTERISTIQUES SPECIALES
(SKC)	SPECIAL KEY CHARACTERISTICS
(SKC)	INDICATION DIMENSIONS S.P.C
(SKC)	DENOTES S.P.C DIMENSIONS
(SKC)	INDICATION DIMENSIONS CRITIQUES
(SKC)	DENOTES CRITICAL DIMENSIONS
(SKC)	INDICATION DIMENSIONS FONCTIONNELLES
(SKC)	DENOTES FUNCTIONAL DIMENSIONS
(SKC)	QUANTITE PAR FEUILLE INDIVIDUELLE
(SKC)	QUANTITY PER INDIVIDUAL SHEET
(SKC)	2 0 6 (SKC) 0

REVISED EC NO: G2072-0072 DRW: PERSQUAIN 2011/11/23 CHKD: PLESSIS 2011/11/23 APPR: BOULCHAN 2012/01/04	DESCRIPTION	GENERAL TOLERANCES (UNLESS SPECIFIED)		DIMENSION STYLE		SCALE	DESIGN UNITS	FIRST ANGLE PROJECTION	
		mm	INCH	MM ONLY		10:1	METRIC	CP RCPT TRM 2.8	
DRAFT WHERE APPLICABLE MUST REMAIN WITHIN DIMENSIONS	SEE CHART	4 PLACES ± --- ± ---	VGUERIN	DATE	2007/11/07	MATERIAL NO. DOCUMENT NO. SHEET NO.			
		3 PLACES ± --- ± ---	CHECKED BY	DATE	2007/11/07				
		2 PLACES ± 0.10 ± ---	APPROVED BY	DATE	2007/11/07	MOLEX INCORPORATED SD-64324-001 1 OF 1			
		1 PLACE ± 0.1 ± ---	LSTICKEIR	DATE	2007/11/07				
ANGULAR ± 2°		THIS DRAWING CONTAINS INFORMATION THAT IS PROPRIETARY TO MOLEX INCORPORATED AND SHOULD NOT BE USED WITHOUT WRITTEN PERMISSION							