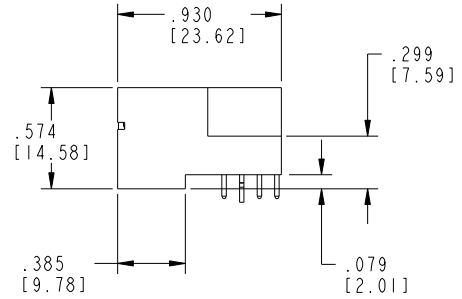
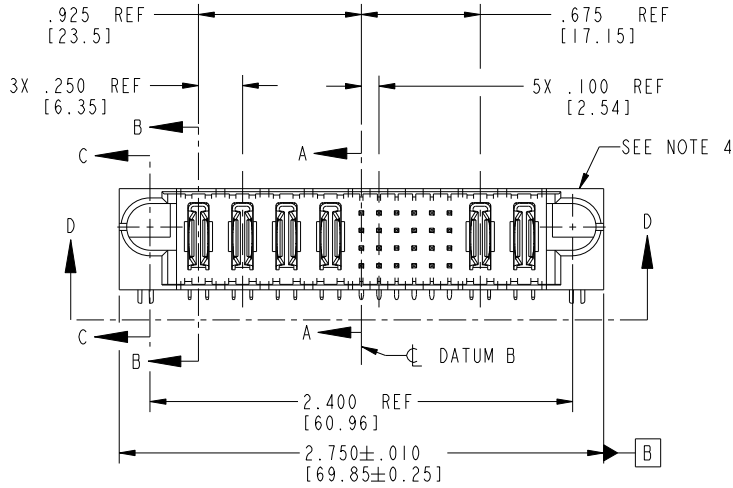
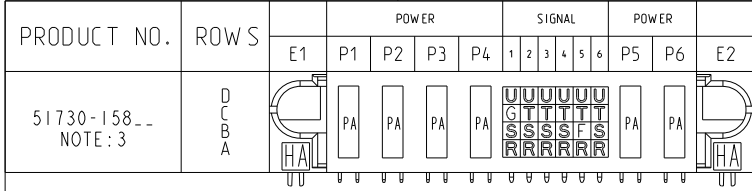


Tous droits strictement réservés. Reproduction ou communication à des tiers interdite sous quelque forme que ce soit sans autorisation écrite du propriétaire.  
Propriété de c FCI. Droits de reproduction FCI.



All rights strictly reserved. Reproduction or issue to third parties in any form whatever is not permitted without written authority from the proprietor.  
Property of FCI. Copyright FCI.



CODE	DIM "M" MATING LENGTH	CONTACT TYPE
F	.220 [5.59]	SIGNAL
G	.220 [5.59]	SIGNAL
R	.270 [6.86]	SIGNAL
S	.270 [6.86]	SIGNAL
T	.270 [6.86]	SIGNAL
U	.270 [6.86]	SIGNAL
PA	N/A [N/A]	POWER
HA	N/A [N/A]	HOLD-DOWN

mat'l code				SEE NOTE 2		tolerances unless otherwise specified		CUSTOMER		www.fciconnect.com	
ltr	ecn no.	dr	date	linear	.XX±.02/0.X±0.5		COPY		title		
A	DG09-0033	WD	02/12/09		.XXX±.01/0.XX±0.25		projection		4P + 24S + 2P RIGHT ANGLE SOLDER HEADER		
				angles	.XXXX±.0040/0.XXX±0.10				product family		
					0°±2°		INCH/MM		PwrBlade		
				dr	Warren Du 02/04/09		scale		code		
				enr	Warren Du 02/04/09		1:1		213		
				chr	Warren Du 02/04/09		A		sheet		
				appd	Warren Du 02/04/09		51730-158		1 of 4		
sheet index		revision sheet		A	A	A	A	cage code		22526	
1		2		3	4			4			

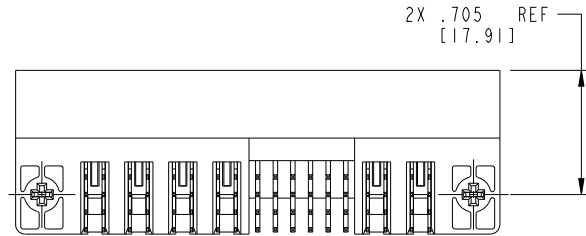
Pro/E

cage code 22526

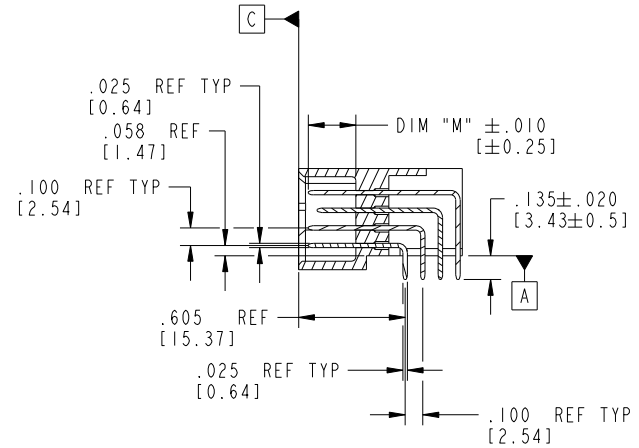
Tous droits strictement reserves. Reproduction ou communication a des tiers interdite sous quelque forme que ce soit sans autorisation écrite du propriétaire. Propriete de c FCI. Droits de reproduction FCI.

All rights strictly reserved. Reproduction or issue to third parties in any form whatsoever is not permitted without written authority from the proprietor. Property of FCI. Copyright FCI.

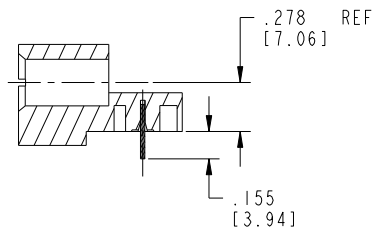
PRODUCT NUMBER  
51730-158\_\_  
NOTE: 3



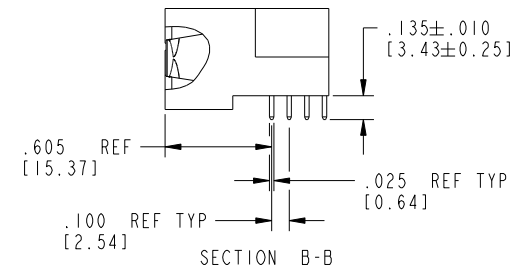
VIEW D-D



SECTION A-A



SECTION C-C



SECTION B-B

mat'l code		SEE NOTE 2		tolerances unless otherwise specified		CUSTOMER		 www.fciconnect.com			
lfr	ecn no.	dr	date	linear	.XX±.02/0.X±0.5	projection		title			
A					.XXX±.01/0.XX±0.25			4P + 24S + 2P		RIGHT ANGLE SOLDER HEADER	
					.XXX±.0040/0.XXX±0.10			product family		PwrBlade code	
				angles	0°±2°	INCH/MM		size			
				dr	Warren Du 02/04/09	scale		dwg no			
				enr	Warren Du 02/04/09	1:1		A 51730-158			
				chr	Warren Du 02/04/09			sheet			
				appd	Warren Du 02/04/09			2 of 4			
sheet index		revision sheet									

cage code 22526

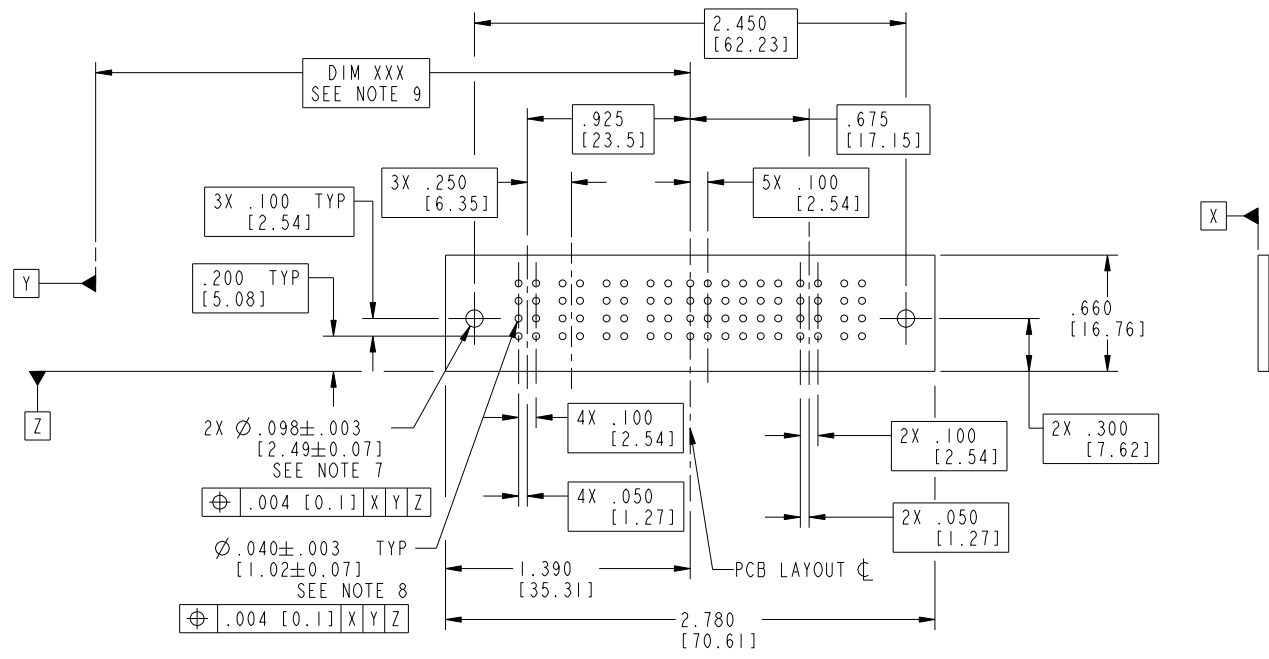
Pro/E

Tous droits strictement reserves. Reproduction ou communication a des tiers interdite sous quelque forme que ce soit sans autorisation écrite du propriétaire. Propriete de c FCI. Droits de reproduction FCI.



All rights strictly reserved. Reproduction or issue to third parties in any form whatever is not permitted without written authority from the proprietor. Property of FCI. Copyright FCI.

PRODUCT NUMBER  
51730-158\_\_  
NOTE: 3



RECOMMENDED PCB LAYOUT

mat'l code		SEE NOTE 2		tolerances unless otherwise specified		CUSTOMER		 www.fciconnect.com	
ltr	ecn no.	dr	date	linear	.XX±.02/0.X±0.5	COPY		title	
A					.XXX±.01/0.XX±0.25	projection		4P + 24S + 2P	
				angles	.XXX±.0040/0.XXX±0.10			RIGHT ANGLE SOLDER HEADER	
				dr	Warren Du 02/04/09	INCH/MM		product family	
				enr	Warren Du 02/04/09	scale		PwrBlade	
				chr	Warren Du 02/04/09	1:1		code	
				appd	Warren Du 02/04/09	A		213	
sheet index		revision sheet				size		dwg no	
						A		51730-158	
						3 of 4			

cage code 22526

Tous droits strictement reserves. Reproduction ou communication a des tiers interdite sous quelque forme que ce soit sans autorisation écrite du propriétaire. Propriete de c FCI. Droits de reproduction FCI.



All rights strictly reserved. Reproduction or issue to third parties in any form whatever is not permitted without written authority from the proprietor. Property of FCI. Copyright FCI.

PRODUCT NUMBER  
51730-158\_\_  
NOTE: 3

NOTES:

1. DIMENSIONS AND TOLERANCES ARE IN ACCORDANCE WITH ASME Y14.5M, 1994 UNLESS OTHERWISE SPECIFIED.

CONNECTORS NOTES:

② HOUSING MATERIAL: UL 94 V-0 GLASS FILLED HIGH TEMP THERMO PLASTIC  
POWER CONTACT MATERIAL: COPPER ALLOY  
SIGNAL PIN MATERIAL: COPPER ALLOY

③ SEE ITEM 1 & 2 IN PRINT 10064183 FOR PLATING SPEC OF 51730-158 AND 51730-158LF RESPECTIVELY.

4. "MANUFACTURER" NAME, P/N, AND DATE CODE TO APPEAR ON THIS SURFACE.

5. PRODUCT SPECIFICATION GS-12-149.

PCB - NOTES:

6. ALL HOLE DIAMETERS ARE FINISHED HOLE SIZE.

⑦ HOLD DOWN THROUGH HOLES ARE UNPLATED.

⑧  $\varnothing .0453 \pm 0.0010$  [1.151  $\pm$  0.025] DRILLED HOLES PLATED WITH 0.0003 [0.008] MIN SnPb OVER .001 [0.03] TO .003 [0.08] Cu PLATING TO ACHIEVE  $\varnothing .040 \pm .003$  [1.02  $\pm$  .07] HOLE.

⑨ "DIM XXX" TO BE DETERMINED BY THE CUSTOMER.

mat'l code		SEE NOTE 2		tolerances unless otherwise specified		CUSTOMER		www.fciconnect.com	
ltr	ecn no.	dr	date	linear	.XX±.02/0.X±0.5	COPY		projection	title 4P + 24S + 2P RIGHT ANGLE SOLDER HEADER
A					.XXX±.01/0.XX±0.25				
				angles	.XXX±.0040/0.XXX±0.10	INCH/MM		product family PwrBlade	code 213
				dr	0°±2°	scale 1:1			
				enr	Warren Du 02/04/09	size		dwg no 51730-158	sheet 4 of 4
				chr	Warren Du 02/04/09	A			
				appd	Warren Du 02/04/09				
sheet index	revision sheet								

cage code 22526

Pro/E