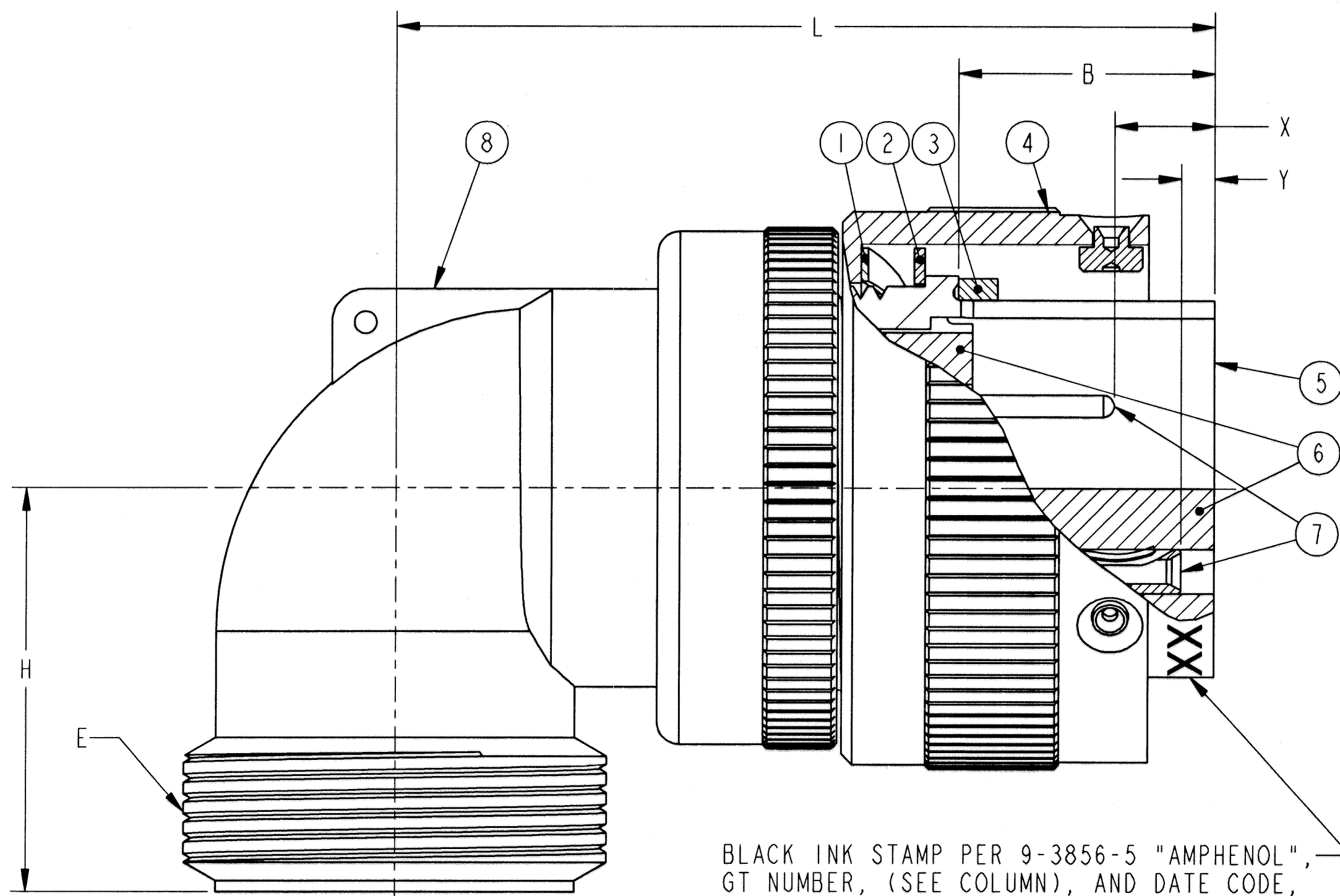
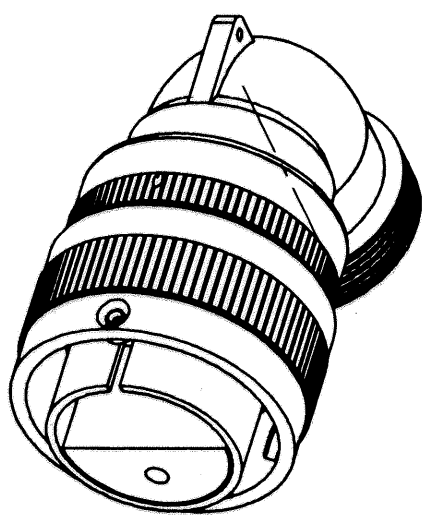
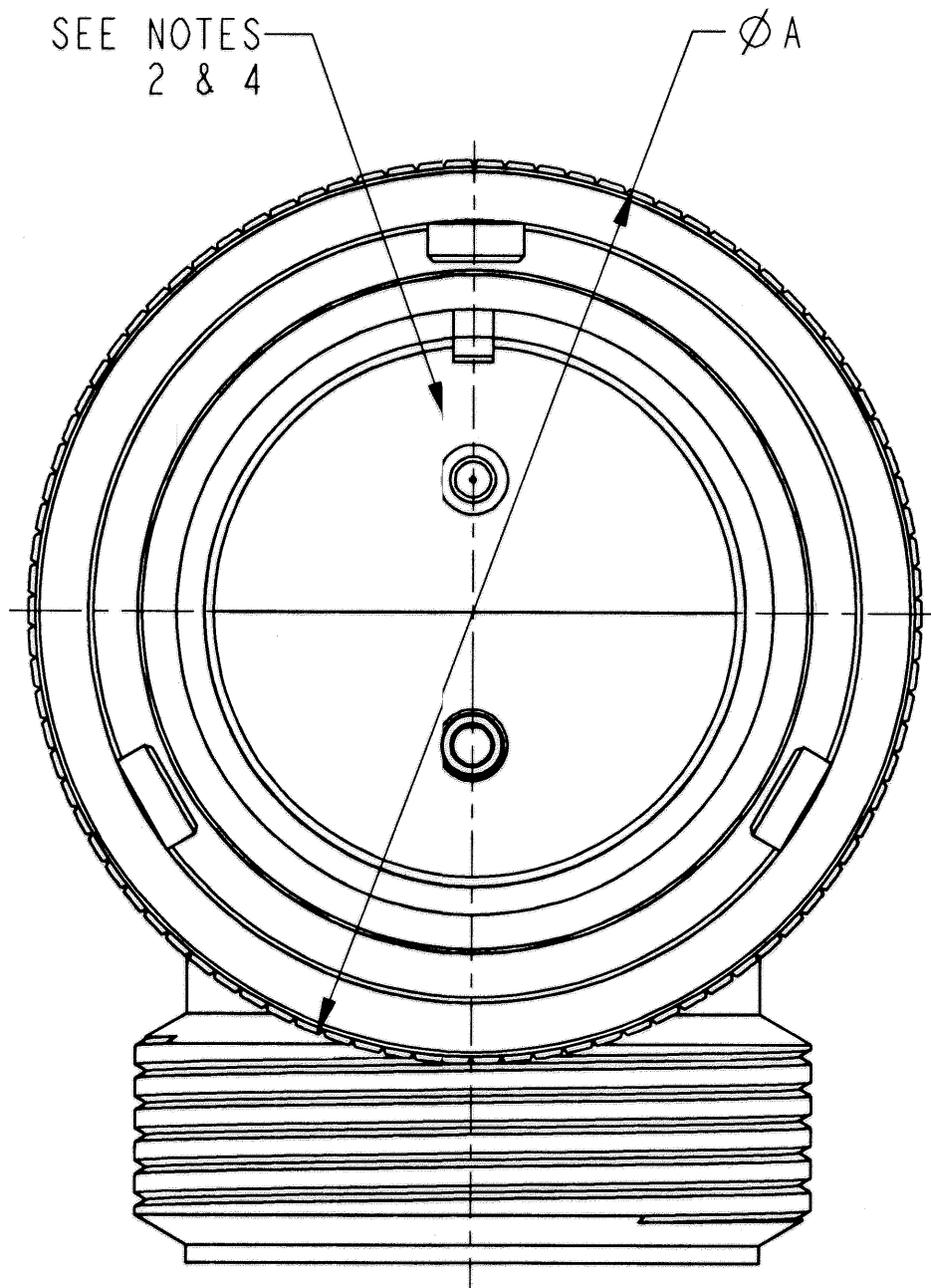


REVISIONS			
LTR	DESCRIPTION	DATE	APPVD
A	INITIAL RELEASE NUM: <u>2002-398</u>		



SEE NOTES  
2 & 4



BLACK INK STAMP PER 9-3856-5 "AMPHENOL",  
GT NUMBER, (SEE COLUMN), AND DATE CODE,  
9-3895, APPROX .094 HIGH. SEE NOTE 6.  
EXAMPLE:  
AMPHENOL GTC08A24-10P 0252

POS	QTY	PART NUMBER	DESCRIPTION	NOTE
8	1	SEE COLUMN	ELBOW ASSEMBLY	3
7		SEE NOTE 8	CONTACTS	
6	1	10-748XX-( )P/S	INSERT	4
5	1	SEE COLUMN	SHELL, PLUG	
4	1	10-564856-XX3	COUPLING NUT	
3	1	10-564843-XX1	GASKET, MAIN JOINT	
2	1	10-564860-XX	WASHER, SKID	
1	1	10-564859-XX	WASHER, WAVED	

UNLESS OTHERWISE SPECIFIED		SPECIFICATIONS	
LINEAR DIMENSIONS ARE IN INCHES		MATERIAL SPEC.	APPROVALS
TOLERANCES:		N/A	A. PRESCOTT 8-3-02
.XXXX = ±.0005		PROCESS SPEC.	DATE
.XXX = ±.010		SEE NOTE 5	8-3-02
.XX = ±.03			
.X = ±.1			
ANGLES = ±2°			
OTHER STANDARDS PER 9-3800 AND DOD-D-1000			
THIRD ANGLE PROJECTION			

PARTS LIST			
<b>AMPHENOL CORPORATION</b>			
AEROSPACE OPERATIONS SIDNEY, N.Y.			
CONNECTOR, ELECTRICAL PLUG, TYPE GTC08A-( ), OLIVE DRAB CADMIUM PLATED		SIZE	REV.
		C 77820	A
SCALE: 3.0 REF: 71-590440/459		FSCM NO.	DOCUMENT NO.
		71-586180-199	71-586180/199

SEE SHEET 2

**NOTES:**

THE USE OF THIS DOCUMENT IS UNLIMITED. HOWEVER, DOCUMENTS REFERENCED HEREON MAY CONTAIN LIMITED RIGHTS DATA.

COMPANY ID: 9    CODED/MS/CUST: N    N/A  
INTERNAL: N    LOT NO: N    N/A  
DATE CODE: N    SEE DRAW: N    N/A

STAMPING DATA      NEXT ASSEMBLY

ASSEMBLY NUMBER	SIZE	GT NUMBER	SHELL	ELBOW ASSEMBLY	A DIA MAX	B ±.005	E THREAD CLASS 2A PLATED	H MAX	L MAX
71-586180-()	8S		NOT AVAILABLE						
71-586181-()	10S		NOT AVAILABLE						
71-586182-()	10SL	GTC08A10SL-()	10-580915-113	10-5880892-113	.897	.531	.6250-24 UNEF	1.181	1.772
71-586183-()	12S		NOT AVAILABLE						
71-586184-()	12		NOT AVAILABLE						
71-586185-()	14S	GTC08A14S-()	10-37266-14	10-580892-143	1.150	.531	.7500-20 UNEF	1.181	1.850
71-586186-()	14		NOT AVAILABLE						
71-586187-()	16S	GTC08A16S-()	10-37266-16	10-580892-163	1.299	.531	.8750-20 UNEF	1.181	1.890
71-586188-()	16	GTC08A16-()	10-37266-17	10-580892-173	1.299	.719	.8750-20 UNEF	1.181	2.244
71-586189-()	18	GTC08A18-()	10-37266-18	10-580892-183	1.437	.719	1.0000-20 UNEF	1.377	2.283
71-586190-()	20	GTC08A20-()	10-37266-20	10-580892-203	1.571	.719	1.1875-18 UNEF	1.377	2.402
71-586191-()	22	GTC08A22-()	10-37266-22	10-580892-223	1.697	.719	1.1875-18 UNEF	1.377	2.402
71-586192-()	24	GTC08A24-()	10-37266-24	10-580892-243	1.835	.719	1.4375-18 UNEF	1.575	2.598
71-586193-()	28	GTC08A28-()	10-37266-28	10-580892-283	2.102	.719	1.4375-18 UNEF	1.575	2.598
71-586194-()	32	GTC08A32-()	10-37266-32	10-580892-323	2.366	.719	1.7500-18 UNS	1.771	2.835
71-586195-()	36	GTC08A36-()	10-37266-36	10-580892-363	2.610	.719	2.0000-18 UNS	1.968	2.953
71-586196-()	40	GTC08A40-()	10-37266-40	10-580892-403	2.850	.719	2.2500-16 UN	2.165	3.071
71-586197/99-()			NOT AVAILABLE						

TO COMPLETE, ADD APPLICABLE INSERT ARRANGEMENT SUFFIX PER 9-2437.

- 9. PACKAGE PER PRODUCTION PROCESS SHEET.
- 8. SEE SEPARATE PARTS LIST FOR COMPONENT PART NUMBERS AND QUANTITIES.
- 7. FOR MATING CONNECTOR ASSEMBLIES, SEE 71-580960/979 AND OTHERS.
- 6. SEE WORK ORDER FOR PERMISSIBLE ADDITIONAL OR ALTERNATE STAMPING.
- 5. PROCESS SPEC:  
 ASSY 9-9238  
 TEST 9-3106-18  
 9-3856-5, 9-3895, 9-2437
- 4. INSERTS ARE NOT REMOVABLE.
- 3. DRAWING ILLUSTRATES FINAL ASSEMBLY. FOR STORAGE AND SHIPPING, ELBOW ASSEMBLY MUST BE LOOSELY COUPLED. CONTACTS ARE SHIPPED UNASSEMBLED.
- 2. FOR CONTACT SIZE, SPACING AND SERVICE RATING, SEE MIL-STD-1651 OR L-11908/40-().
- 1. UNIT MEETS THE APPLICABLE REQUIREMENTS OF MIL-C-5015.

INTERFACE REQUIREMENTS			
CONTACT SIZE	SHELL SIZE	X	Y ±.040
16 SHORT	10SL, 14S, 16S	.087±.039	.079
16 LONG	16 THRU 40	.260 <sup>+.052</sup> -.041	.102
12	16 THRU 40	.118 <sup>+.039</sup> -.056	.102
0,4,8	16 THRU 40	.091±.039	.102

NOTES:

THE USE OF THIS DOCUMENT IS UNLIMITED. HOWEVER, DOCUMENTS REFERENCED HEREON MAY CONTAIN LIMITED RIGHTS DATA.

SIZE <b>C</b>	FSCM NO. <b>77820</b>	DOCUMENT NO. <b>71-586180/199</b>	REV. <b>A</b>
SCALE: 3.0		REF:	SHEET 2 OF 2